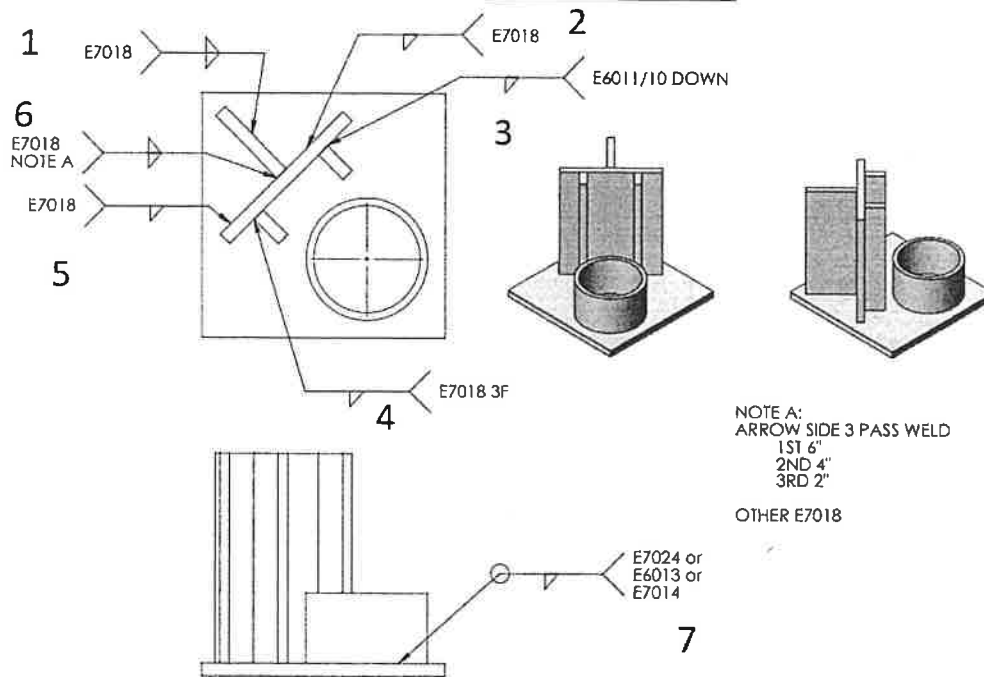


Contest # 1002

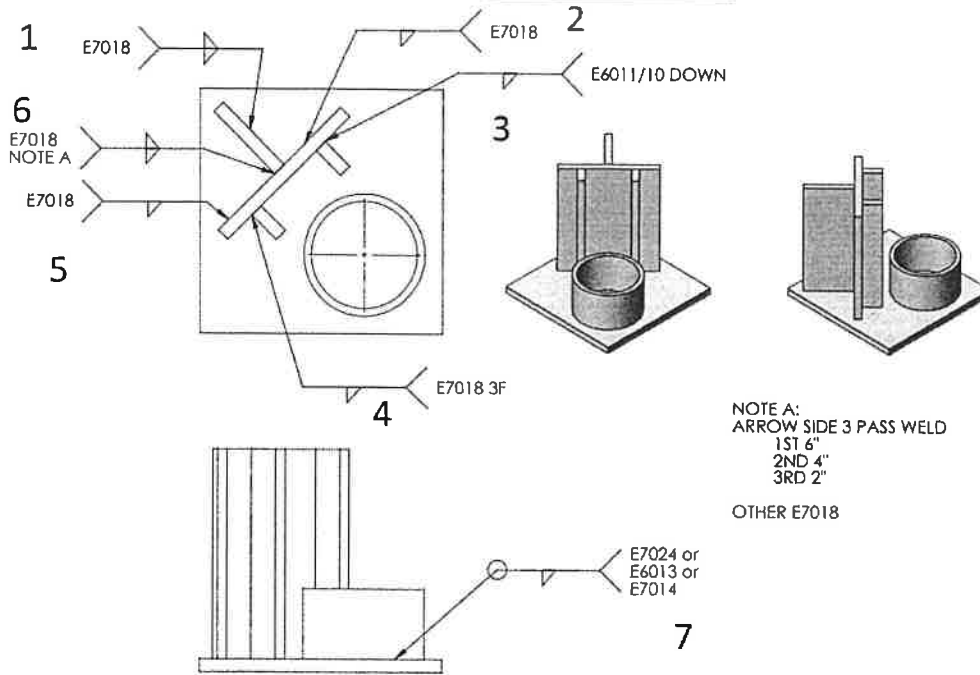
SMAW



Weld #	Description	Points Possible	Score
1 <i>missing</i>	2F BASE	10	0
2 <i>missing</i>	2F BASE	10	0
3 <i>large gap in weld</i>	3F DOWN	10	4
4 <i>porosity</i>	3F	10	5
5 <i>missing</i>	2F BASE	10	0
6 <i>improper 3 pass</i>	3 pass and vertical	15	5
7	Pipe to Base	10	6
Penalty -		Total Points	20 175

Contest # 1047

SMAW

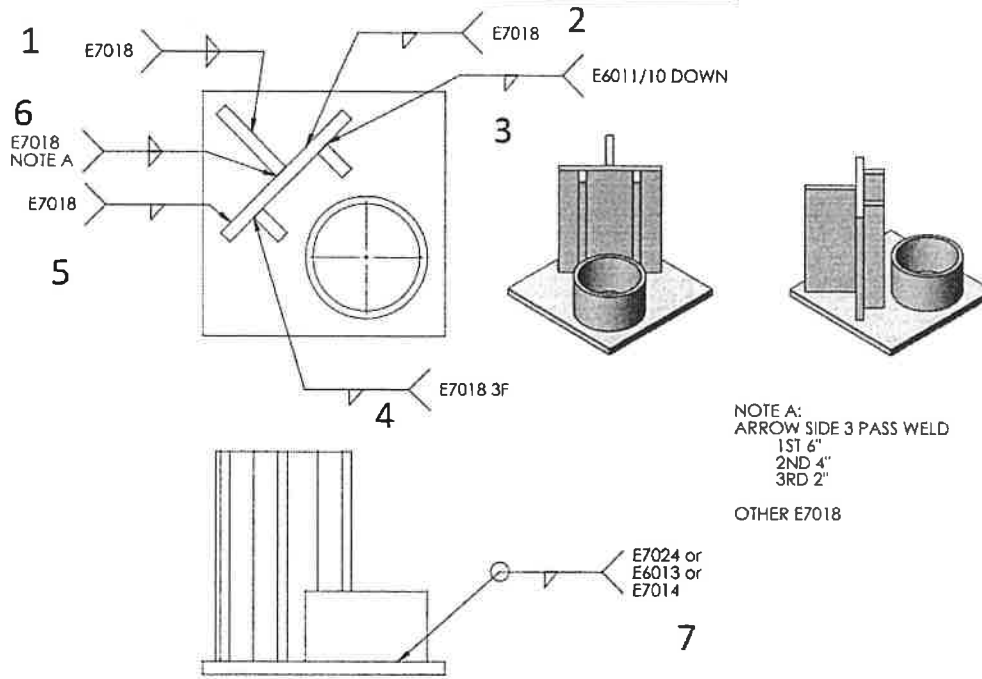


NOTE A:
ARROW SIDE 3 PASS WELD
1ST 6"
2ND 4"
3RD 2"
OTHER E7018

Weld #	Description	Points Possible	Score
1 <i>porosity</i>	2F BASE	10	5
2	2F BASE	10	6
3	3F DOWN	10	6
4 <i>off location</i>	3F	10	5
5	2F BASE	10	5
6 <i>gaps in weld</i>	3 pass and vertical	15	5
7	Pipe to Base	10	5
Penalty -		Total Points	37
			42 175

Contest # 1080

SMAW



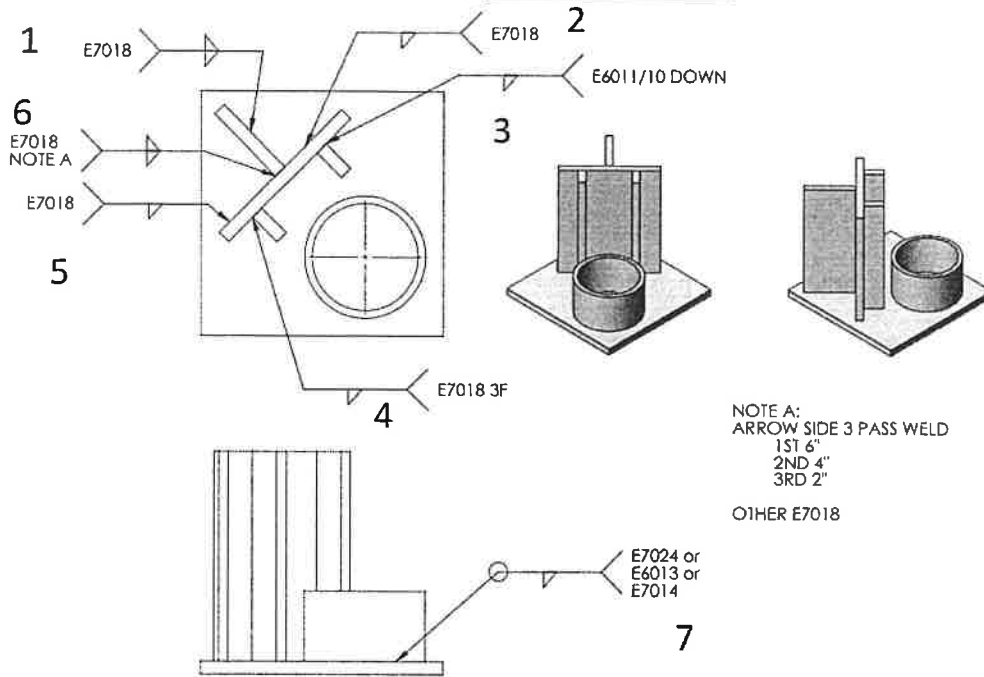
NOTE A:
ARROW SIDE 3 PASS WELD
1ST 6"
2ND 4"
3RD 2"

OTHER E7018

Weld #	Description	Points Possible	Score
1 <i>missing 2 welds</i>	2F BASE	10	0
2	2F BASE	10	4
3 <i>porosity undersized short length</i>	3F DOWN	10	4
4 <i>inconsistent contact</i>	3F	10	3
5	2F BASE	10	3
6 <i>no contact between materials</i>	3 pass and vertical	15	3
7 <i>pipe is loose</i>	Pipe to Base	10	2
Penalty -		Total Points	19 175

Contest # 1089

SMAW



NOTE A:
ARROW SIDE 3 PASS WELD
1ST 6"
2ND 4"
3RD 2"

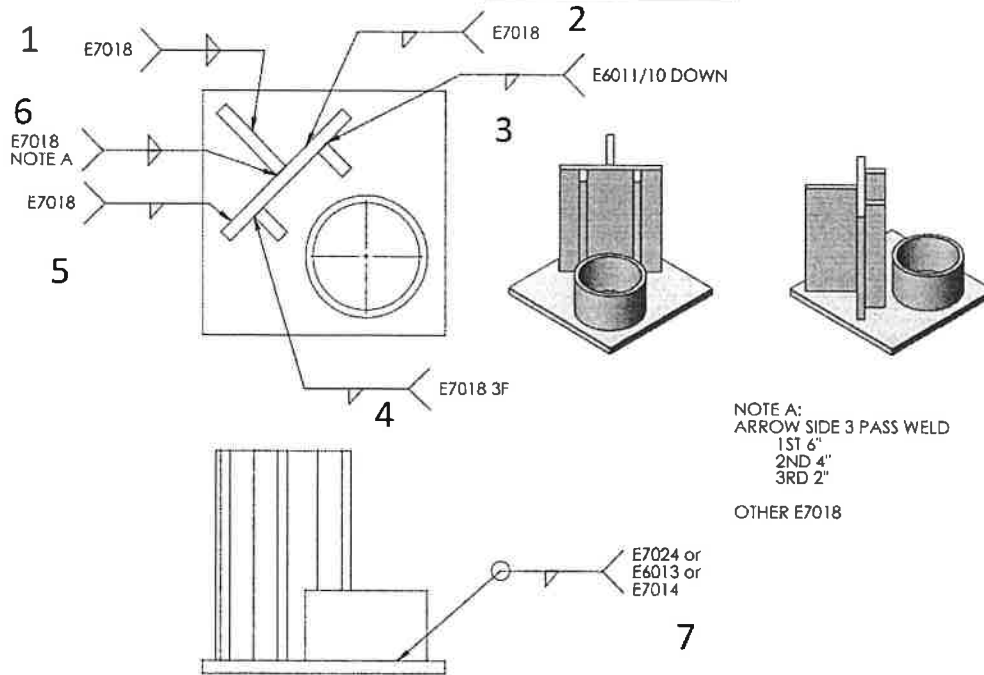
OTHER E7018

Weld #	Description	Points Possible	Score
1	2F BASE	10	7
2	2F BASE	10	8
3	3F DOWN	10	7
4	3F	10	7
5	2F BASE	10	6
6	3 pass and vertical	15	7
7	Pipe to Base	10	8
Penalty - -1 spatter		Total Points	49
			175



Contest # 1102

SMAW



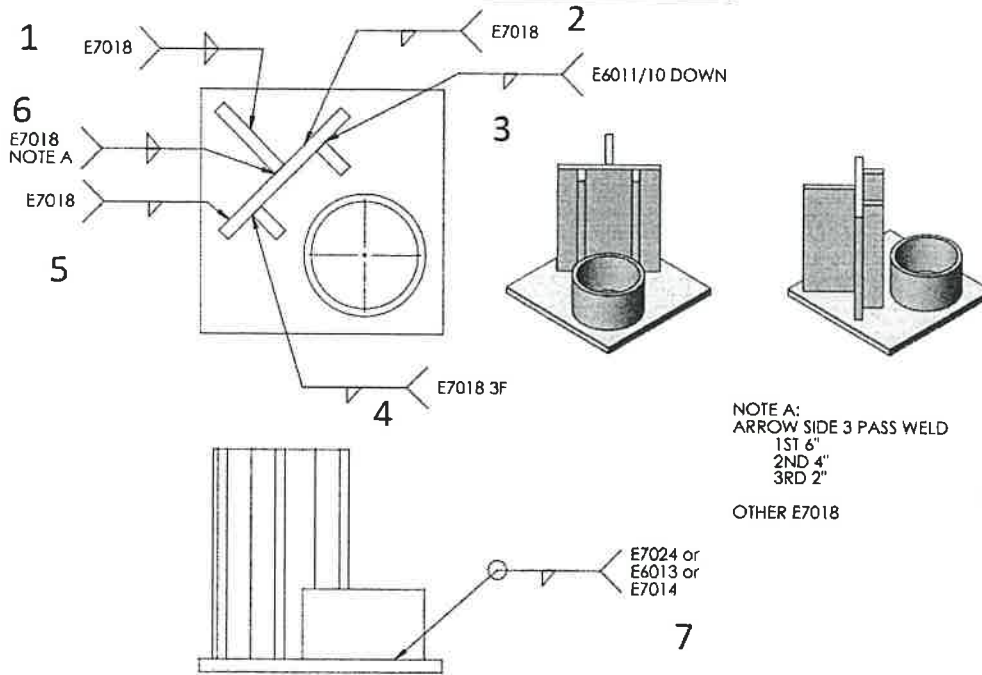
NOTE A:
ARROW SIDE 3 PASS WELD
1ST 6"
2ND 4"
3RD 2"

OTHER E7018

Weld #	Description	Points Possible	Score
1	2F BASE	10	8
2	2F BASE	10	7 15
3 <i>pin holes</i>	3F DOWN	10	6
4 <i>off location</i>	3F	10	5 18
5	2F BASE	10	7
6 <i>too much overlap</i>	3 pass and vertical	15	10 16
7 <i>pin holes</i>	Pipe to Base	10	6
Penalty -	Total Points		49 175

Contest # 1119

SMAW



NOTE A:
ARROW SIDE 3 PASS WELD
1ST 6"
2ND 4"
3RD 2"

OTHER E7018

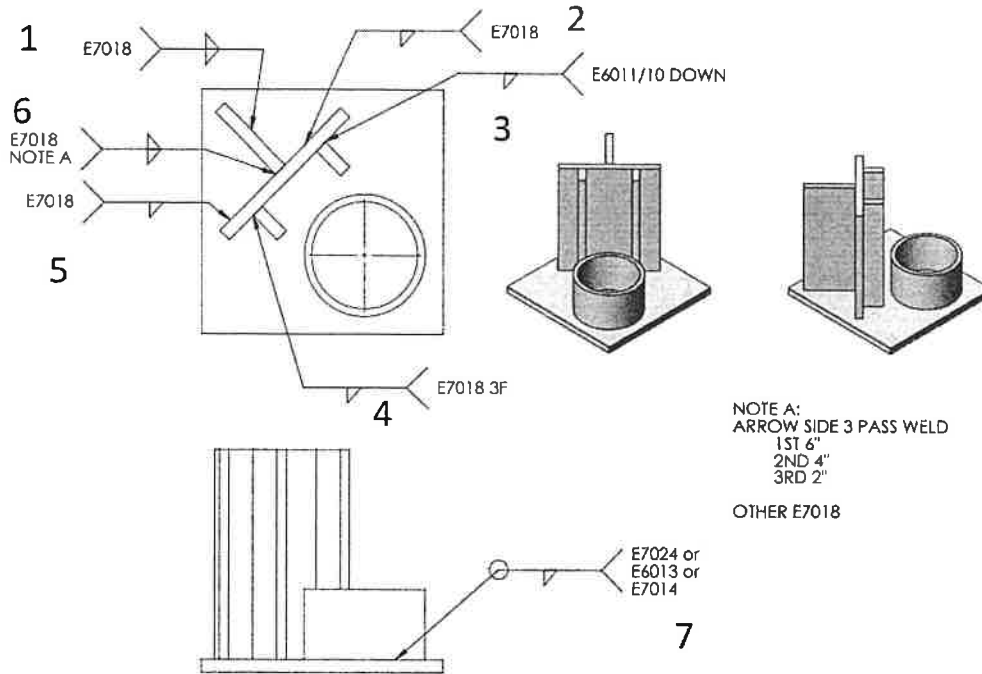
Weld #	Description	Points Possible	Score
1	2F BASE	10	8
2	2F BASE	10	8
3	3F DOWN	10	7
4 <i>inconsistent</i>	3F	10	5
5	2F BASE	10	7
6	3 pass and vertical	15	8
7	Pipe to Base	10	6
Penalty - <i>-1 spatter</i>		Total Points	48 175

53



Contest # 1135

SMAW



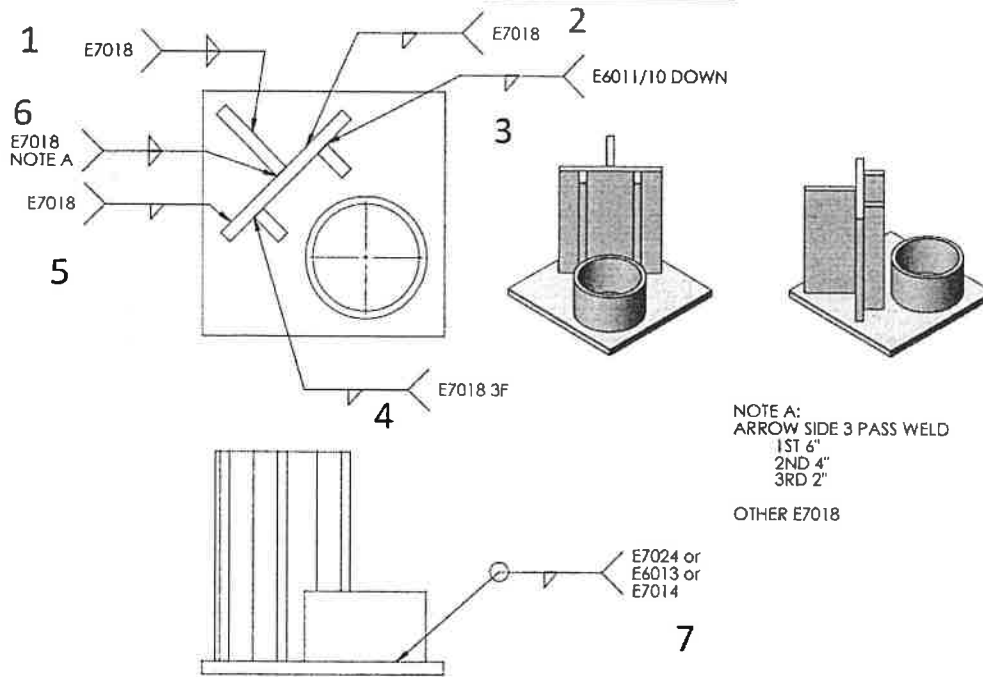
NOTE A:
ARROW SIDE 3 PASS WELD
1ST 6"
2ND 4"
3RD 2"

OTHER E7018

Weld #	Description	Points Possible	Score
1	2F BASE	10	7 7
2	2F BASE	10	6
3	3F DOWN	10	3
4	3F	10	5
5	2F BASE	10	7
6 - one missing	3 pass and vertical	15	6
7	Pipe to Base	10	6
Penalty - -1 spatter		Total Points	39
			175

Contest # 1161

SMAW



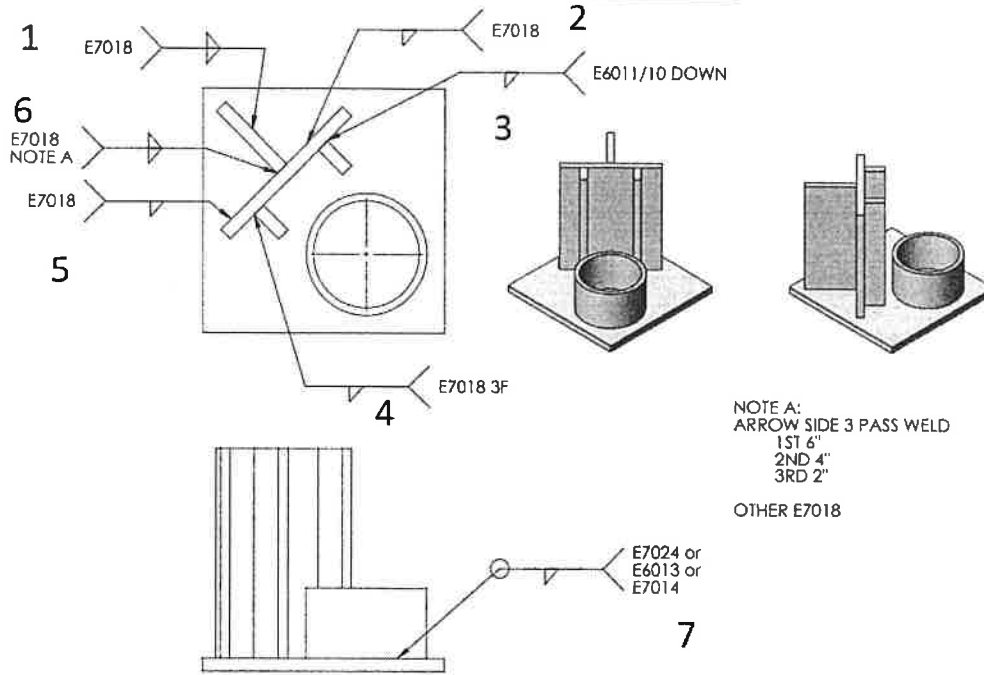
NOTE A:
ARROW SIDE 3 PASS WELD
1ST 6"
2ND 4"
3RD 2"

OTHER E7018

Weld #	Description	Points Possible	Score
1	2F BASE	10	7
2	2F BASE	10	7
3 <i>porosity</i>	3F DOWN	10	6 <i>20</i>
4	3F	10	6 <i>22</i>
5	2F BASE	10	6 <i>5</i>
6 <i>3 pass off location</i>	3 pass and vertical	15	10
7 <i>gap/pin holes</i>	Pipe to Base	10	5
Penalty <i>-2 spatter, location</i>	Total Points		45 <i>175</i>

Contest # 1163

SMAW



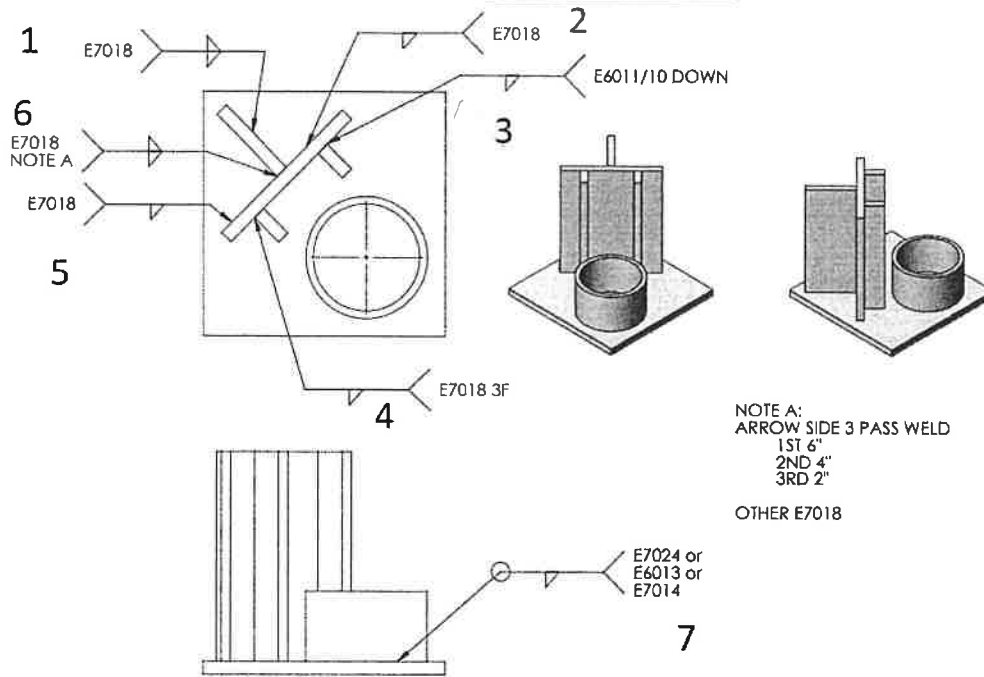
NOTE A:
ARROW SIDE 3 PASS WELD
1ST 6"
2ND 4"
3RD 2"

OTHER E7018

Weld #	Description	Points Possible	Score
1	2F BASE	10	5
2	2F BASE	10	5
3 <i>porosity</i>	3F DOWN	10	5
4 <i>inconsistent</i>	3F	10	5
5	2F BASE	10	5
6 <i>off location</i>	3 pass and vertical	15	7
7 <i>porosity</i>	Pipe to Base	10	5
Penalty -1 weld on wrong side -1 spatter		Total Points	35 175

Contest # 1187

SMAW



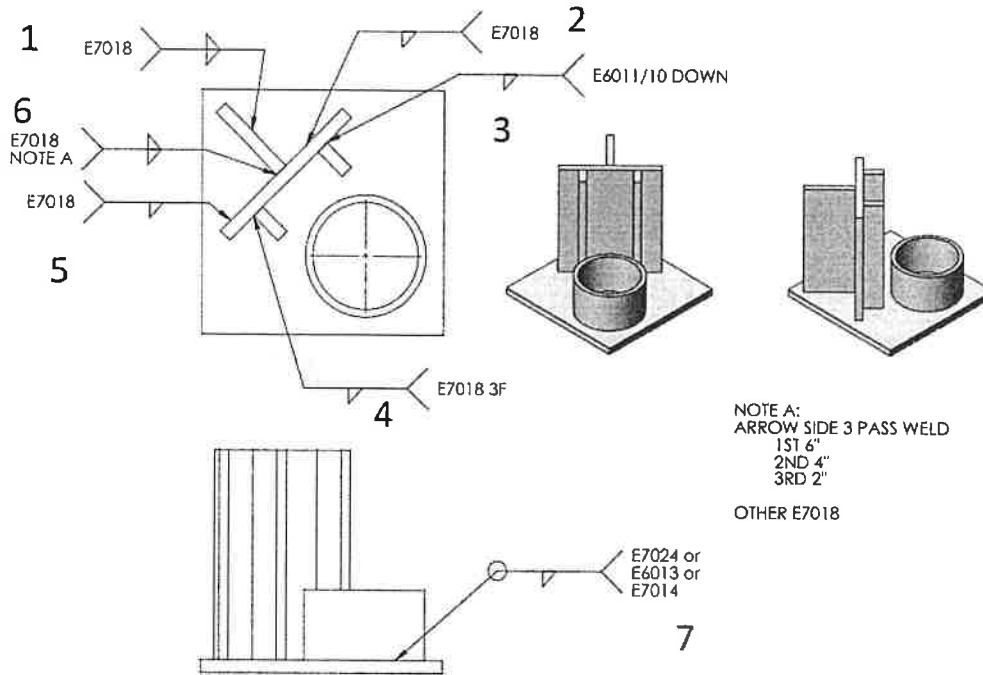
NOTE A:
ARROW SIDE 3 PASS WELD
1ST 6"
2ND 4"
3RD 2"

OTHER E7018

Weld #	Description	Points Possible	Score
1	2F BASE	10	7
2	Weld not centered 2F BASE	10	6
3	porosity in weld 3F DOWN	10	5
4	3F	10	3
5	2F BASE	10	7
6	3 pass and vertical	15	5
7	Pipe to Base	10	6
Penalty - -2 excessive spatter -1 alignment of components		Total Points	36 / 75

Contest # 1208

SMAW



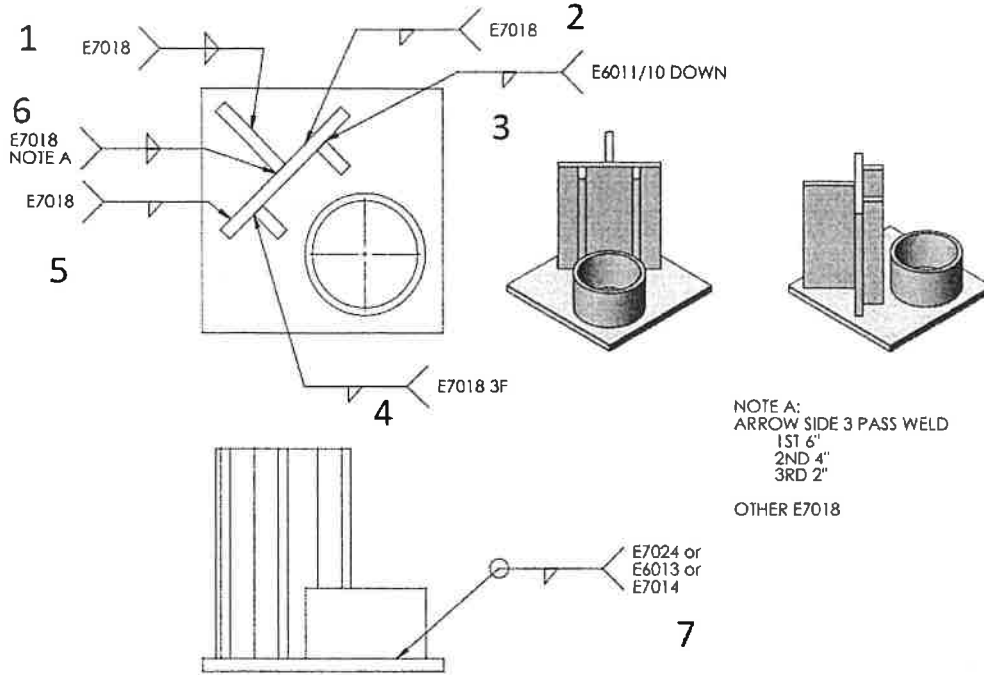
NOTE A:
ARROW SIDE 3 PASS WELD
1ST 6"
2ND 4"
3RD 2"

OTHER E7018

Weld #	Description	Points Possible	Score
1 <i>inconsistent</i>	2F BASE	10	6
2	2F BASE	10	7 713
3 <i>lots of porosity</i>	3F DOWN	10	2 7 13
4 <i>inconsistent</i>	3F	10	6 7 13
5 <i>short, rolled off location</i>	2F BASE	10	5
6 <i>missing 2 pass gap in vertical</i>	3 pass and vertical	15	8 18
7 <i>lack of penetration gap in weld</i>	Pipe to Base	10	5
Penalty - - / off location - -		Total Points	44 175

Contest # 1211

SMAW

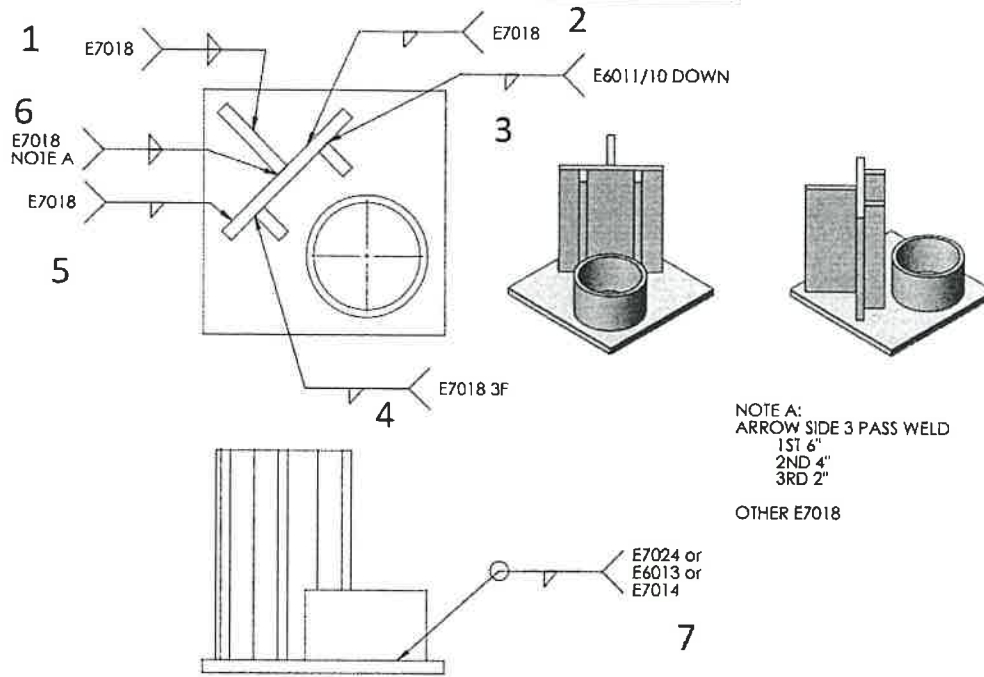


NOTE A:
ARROW SIDE 3 PASS WELD
1ST 6"
2ND 4"
3RD 2"
OTHER E7018

Weld #	Description	Points Possible	Score
1	2F BASE	10	3
2	2F BASE	10	4 } 7
3	3F DOWN	10	4 } 7
4	3F	10	3
5	2F BASE	10	5
6	3 pass and vertical	15	0 ¹⁰
7	Pipe to Base	10	5
Penalty - - 1 pt location of components - 1 spatter		Total Points	22 175

Contest # 1242

SMAW



NOTE A:
ARROW SIDE 3 PASS WELD
1ST 6"
2ND 4"
3RD 2"

OTHER E7018

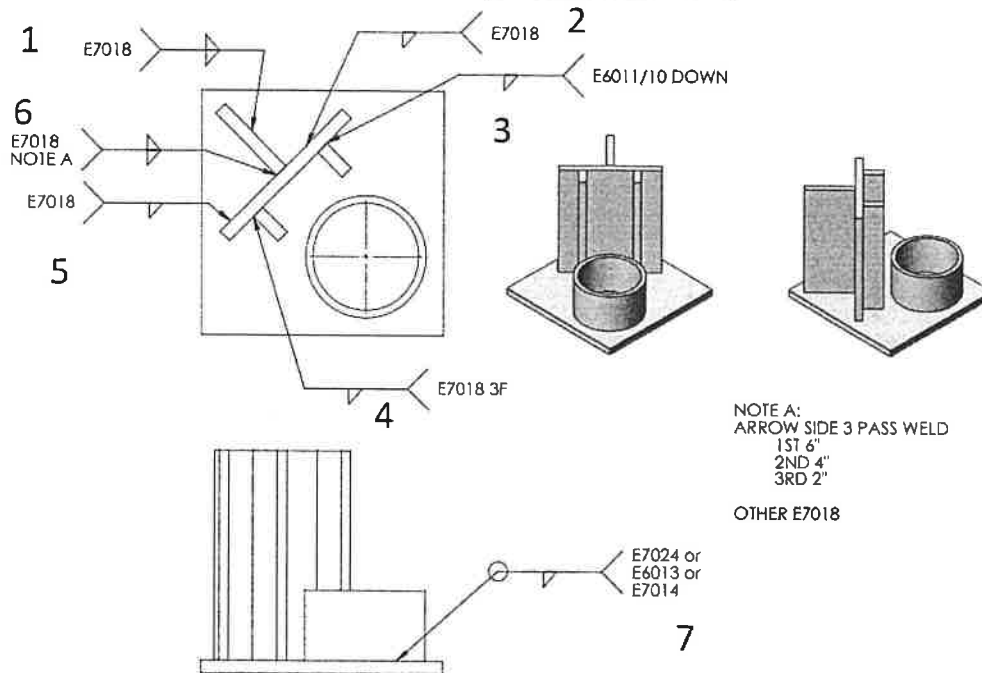
Weld #	Description	Points Possible	Score
1 Welds tied in	2F BASE	10	8
2 Extra welds tied in	2F BASE	10	8 } 16
3	3F DOWN	10	7
4	3F	10	7 } 21
5	2F BASE	10	7
6	3 pass and vertical	15	7 10 } 19
7	Pipe to Base	10	9
Penalty - -1 parts off location - 1 Extra weld not called out		Total Points	54 } 175

56



Contest # 1300

SMAW



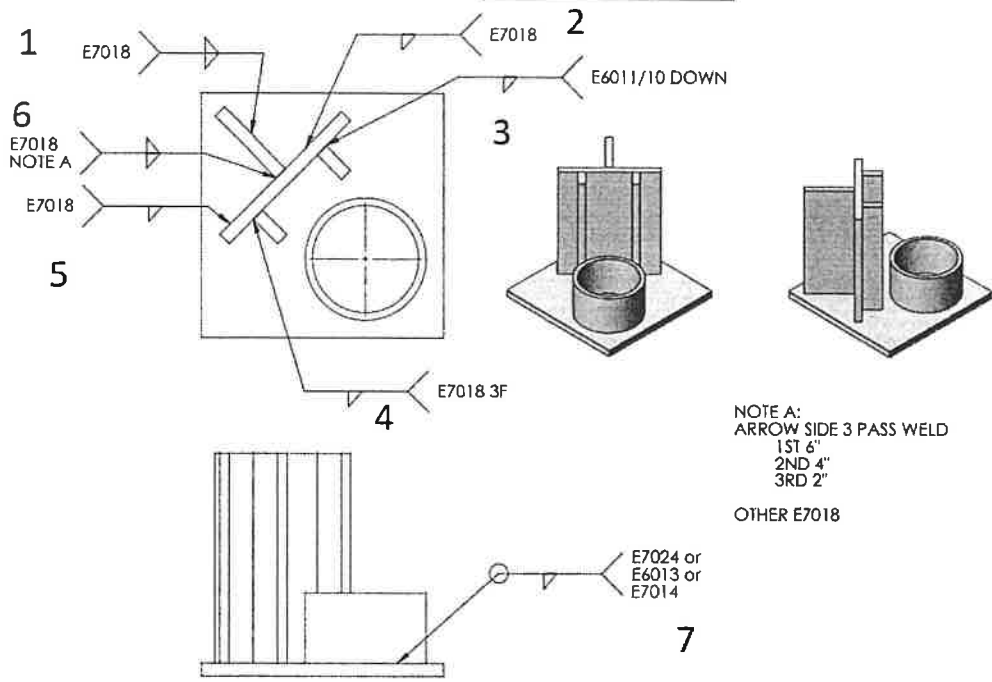
NOTE A:
ARROW SIDE 3 PASS WELD
1ST 6"
2ND 4"
3RD 2"

OTHER E7018

Weld #	Description	Points Possible	Score
1 <i>heavy porosity</i>	2F BASE	10	3
2 <i>missing</i>	2F BASE	10	0
3 <i>incomplete</i>	3F DOWN	10	3
4 <i>incomplete</i>	3F	10	3
5 <i>missing</i>	2F BASE	10	0
6 <i>incomplete 3 pass</i>	3 pass and vertical	15	3
7	Pipe to Base	10	5
Penalty - - / <i>orientation is incorrect</i>		Total Points	16 + 7 = 175

Contest # 1312

SMAW



NOTE A:
ARROW SIDE 3 PASS WELD
1ST 6"
2ND 4"
3RD 2"

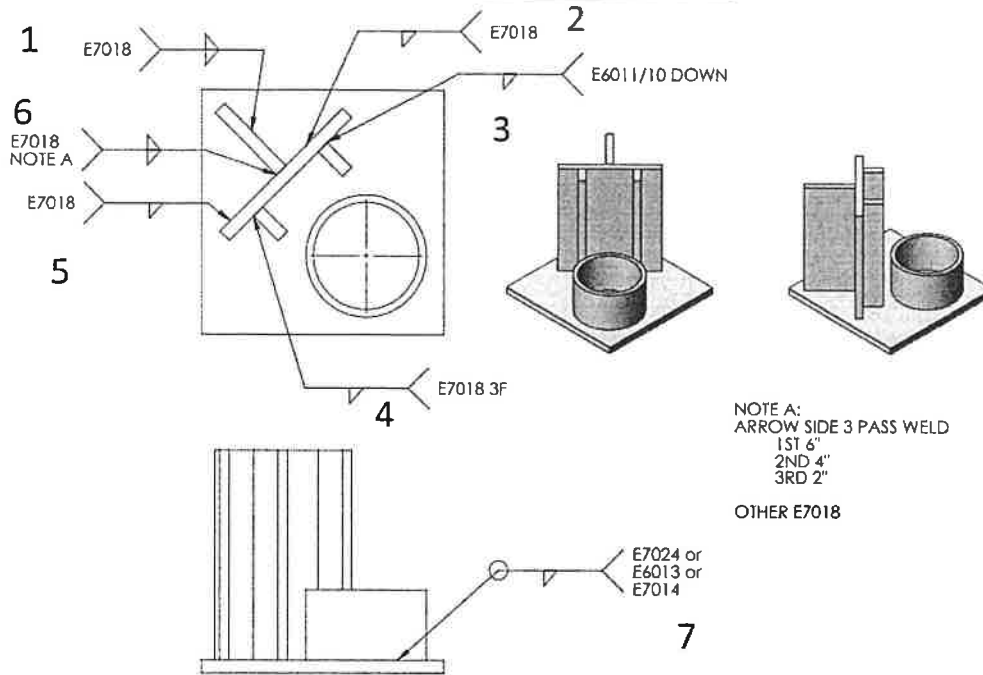
OTHER E7018

Weld #	Description	Points Possible	Score
1	2F BASE	10	8
2	2F BASE	10	7
3 <i>porosity</i>	3F DOWN	10	6
4 <i>porosity under cut</i>	3F	10	5
5	2F BASE	10	8
6 <i>Nice vertical</i>	3 pass and vertical	15	7
7	Pipe to Base	10	5
Penalty - -1 weld spatter		Total Points	45 175



Contest # 1320

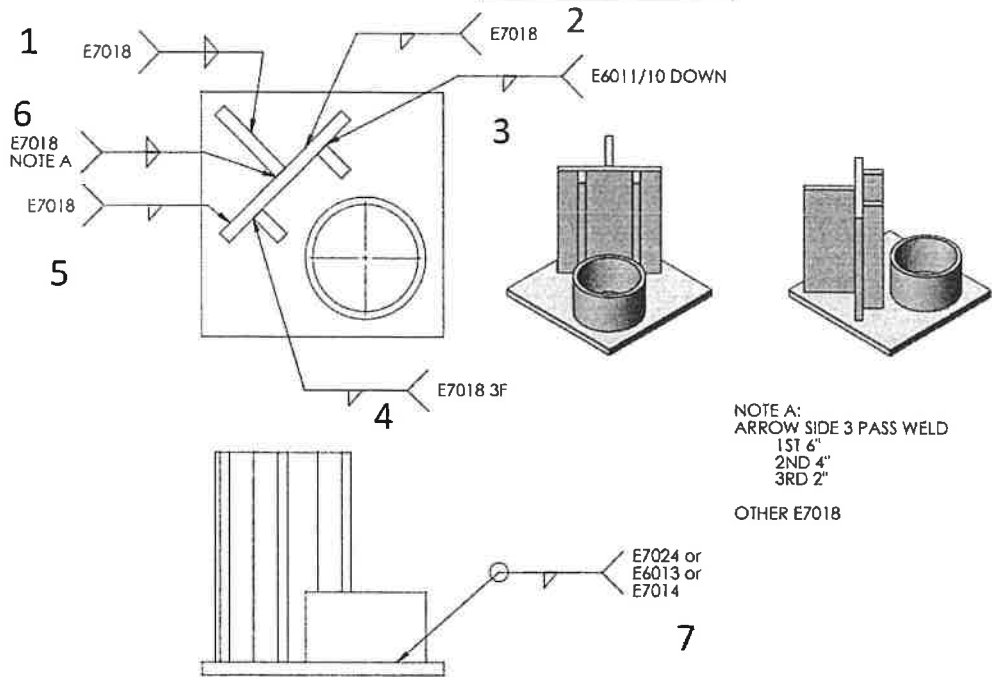
SMAW



Weld #	Description	Points Possible	Score
1 <i>missing weld</i>	2F BASE	10	0
2	2F BASE	10	7
3	3F DOWN	10	5 12
4	3F	10	5 15
5	2F BASE	10	5
6 <i>missing for 3 pass</i>	3 pass and vertical	15	7
7	Pipe to Base	10	7
Penalty -2 <i>location and alignment</i>		Total Points	32 175

Contest # 1324

SMAW



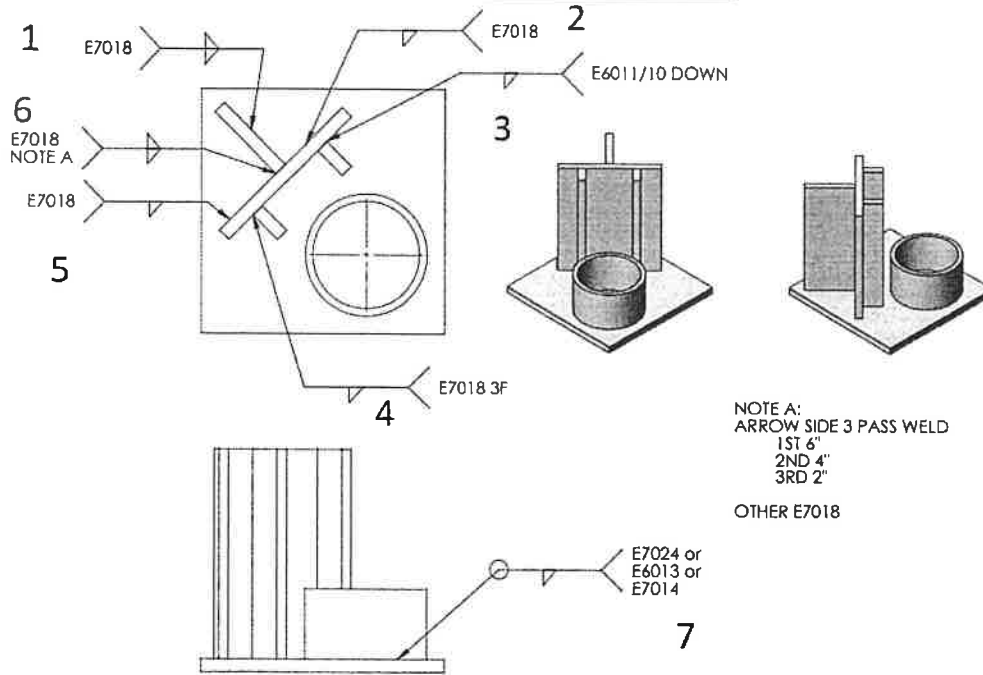
NOTE A:
ARROW SIDE 3 PASS WELD
1ST 6"
2ND 4"
3RD 2"
OTHER E7018

Weld #	Description	Points Possible	Score
1	2F BASE	10	7
2	2F BASE	10	7
3	3F DOWN	10	7
4	3F	10	5
5	2F BASE	10	6
6	3 pass and vertical	15	6
7	Pipe to Base	10	6
Penalty - -1 part locations		Total Points	43
			175



Contest # 1327

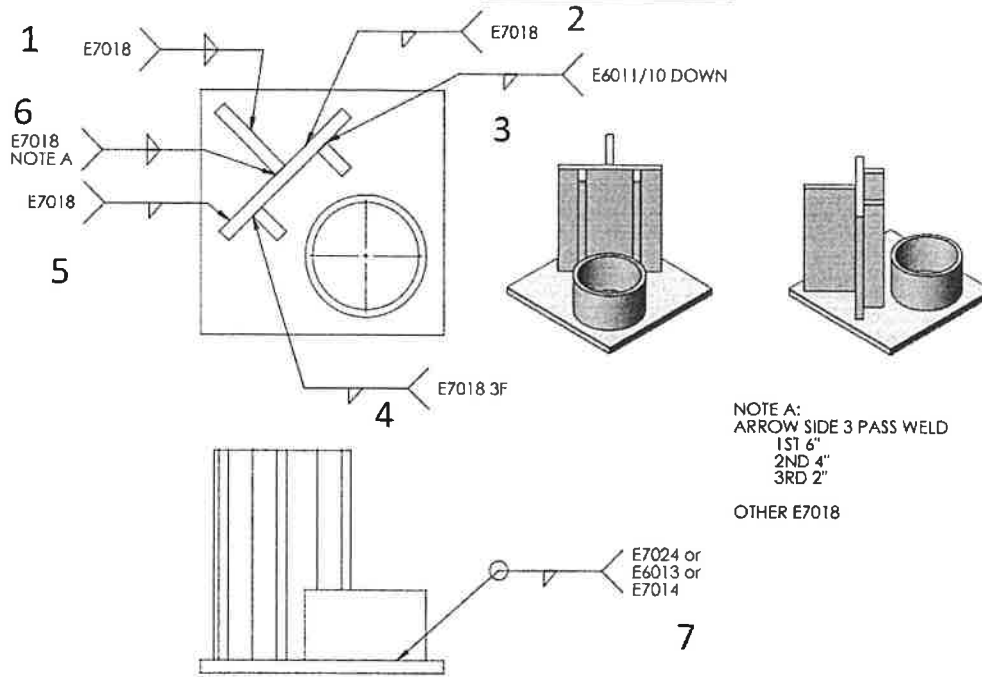
SMAW



Weld #	Description	Points Possible	Score
1	2F BASE	10	5
2	2F BASE	10	6
3	3F DOWN	10	7
4	sags in weld 3F	10	4
5	2F BASE	10	7
6	off center welds 3 pass and vertical	15	6
7	Pipe to Base	10	7
Penalty - -2 excessive weld spatter -1 wrap welds, but not all		Total Points	39 175

Contest # 1330

SMAW



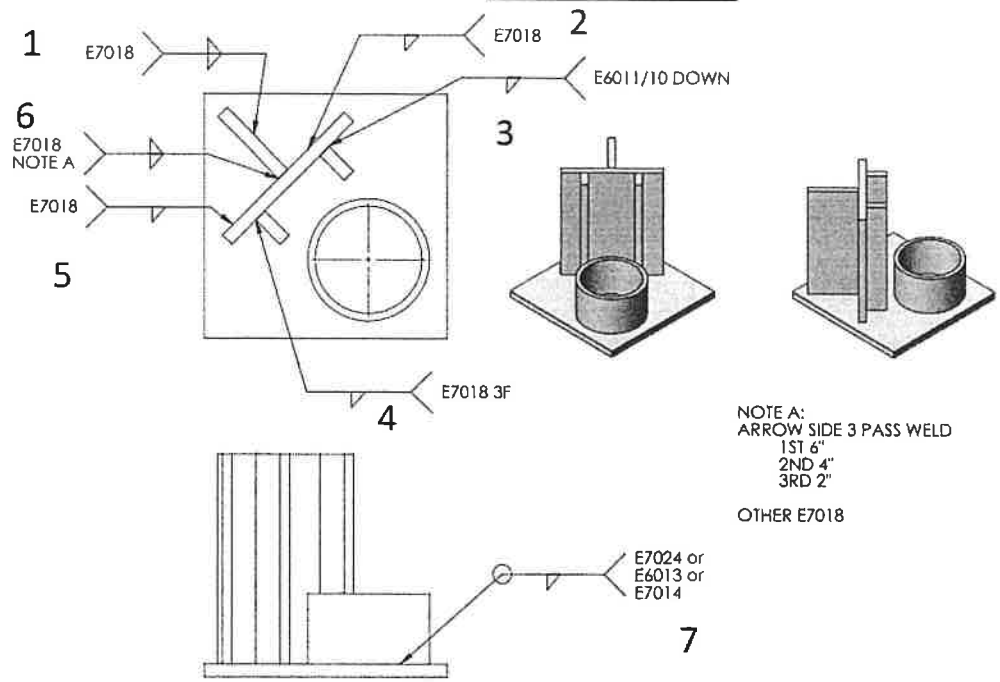
NOTE A:
ARROW SIDE 3 PASS WELD
1ST 6"
2ND 4"
3RD 2"

OTHER E7018

Weld #	Description	Points Possible	Score
1	2F BASE	10	8
2 <i>large bubble</i>	2F BASE	10	6 <i>7/14</i>
3	3F DOWN	10	6 <i>7/11</i>
4	3F	10	5 <i>7/11</i>
5	2F BASE	10	7
6 <i>slightly off location</i>	3 pass and vertical	15	11 <i>25</i>
7 <i>pin hole</i>	Pipe to Base	10	7
Penalty - <i>spatter, components slightly off location</i>	Total Points		49 <i>175</i>

Contest # 1341

SMAW



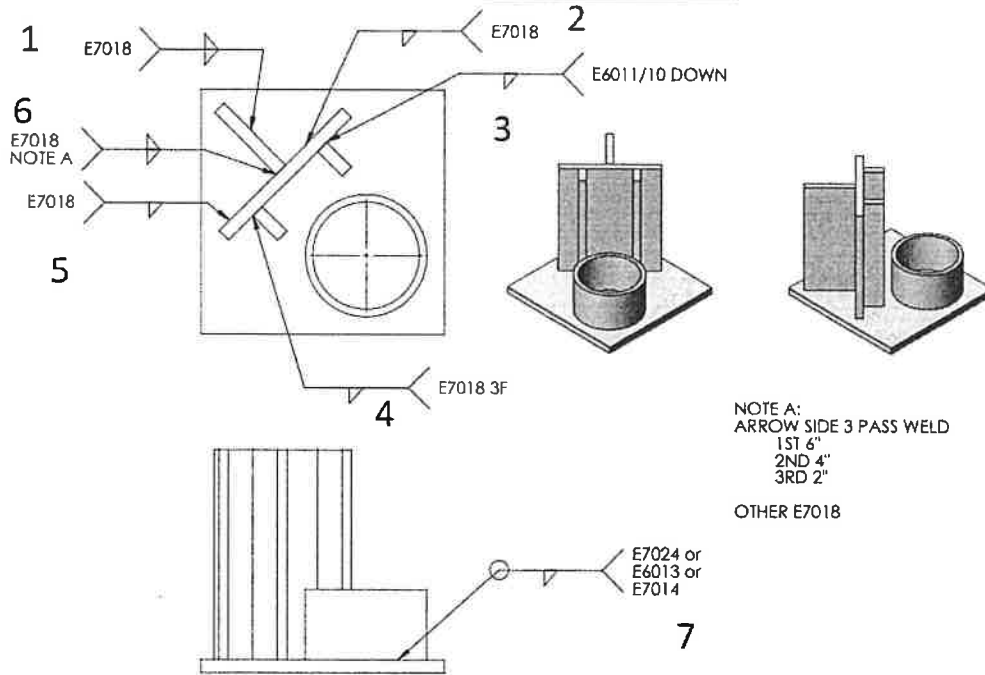
Weld #	Description	Points Possible	Score
1 <i>Stopped somewhat short</i>	2F BASE	10	8
2	2F BASE	10	8
3 <i>pin holes</i>	3F DOWN	10	7
4 <i>stopped short</i>	3F	10	7
5	2F BASE	10	7
6 <i>Nice work!!</i>	3 pass and vertical	15	13
7 <i>small pinhole</i>	Pipe to Base	10	8
Penalty - / Spatter - / components not seated to plate		Total Points	56 58 175

42
16
58



Contest # 1362

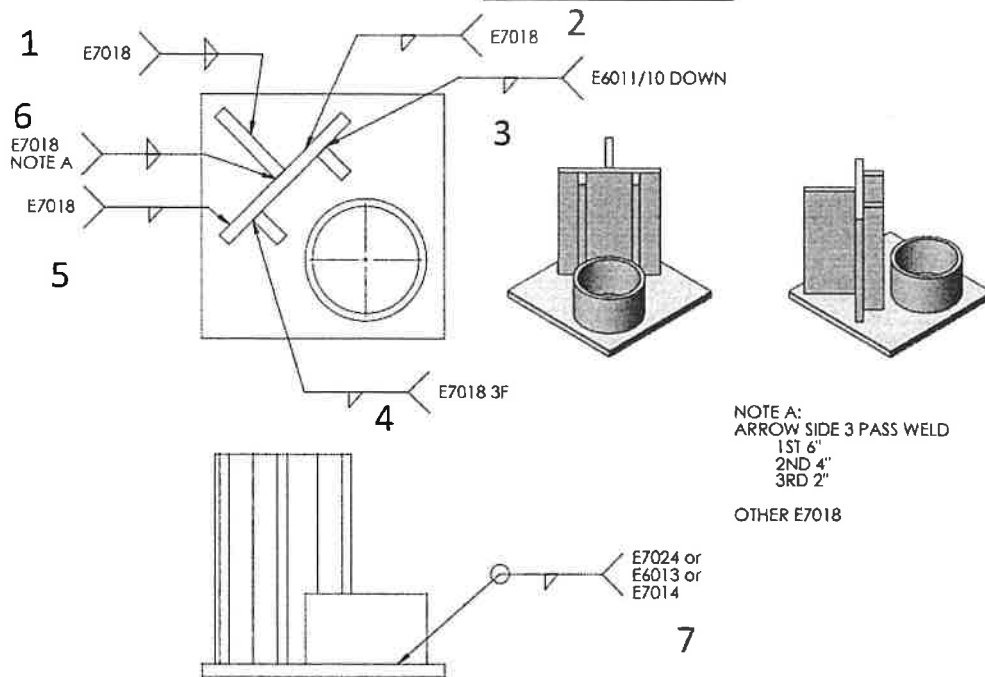
SMAW



Weld #	Description	Points Possible	Score
1	2F BASE	10	7
2	2F BASE	10	7 721
3	3F DOWN	10	7
4 <i>inconsistent</i>	3F	10	6 13
5	2F BASE	10	7
6	3 pass and vertical	15	7 11 19
7	Pipe to Base	10	8
Penalty -		Total Points	53 175

Contest # 1364

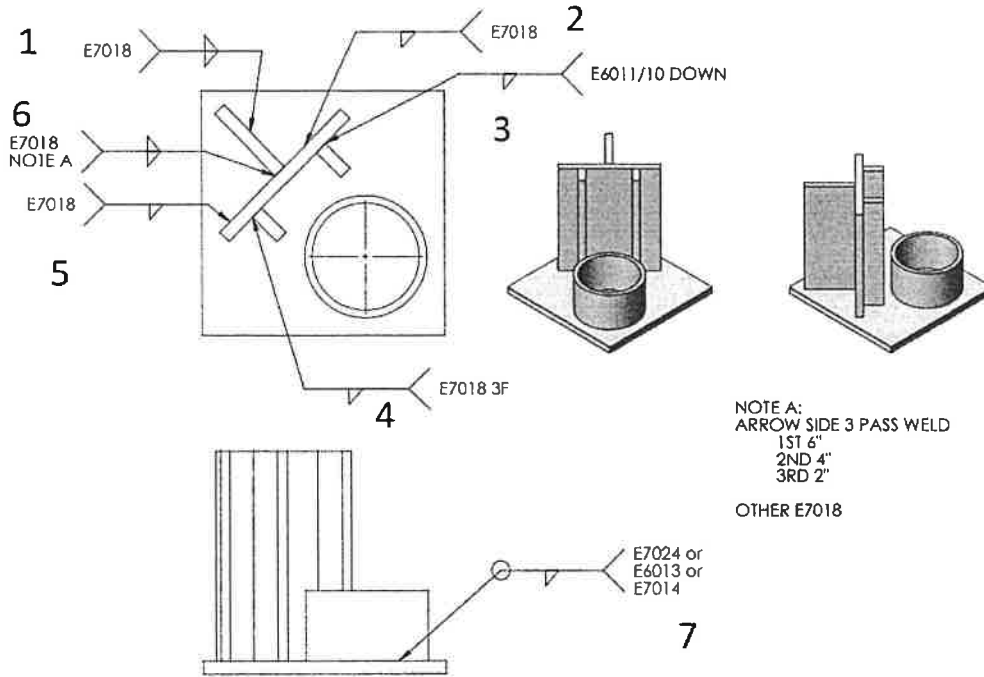
SMAW



Weld #	Description	Points Possible	Score
1	2F BASE	10	6
2	2F BASE	10	5
3	3F DOWN	10	5
4	3F	10	4
5	2F BASE	10	6
6	3 pass and vertical	15	6
7	Pipe to Base	10	6
Penalty -		Total Points	38
			175

Contest # 1367

SMAW



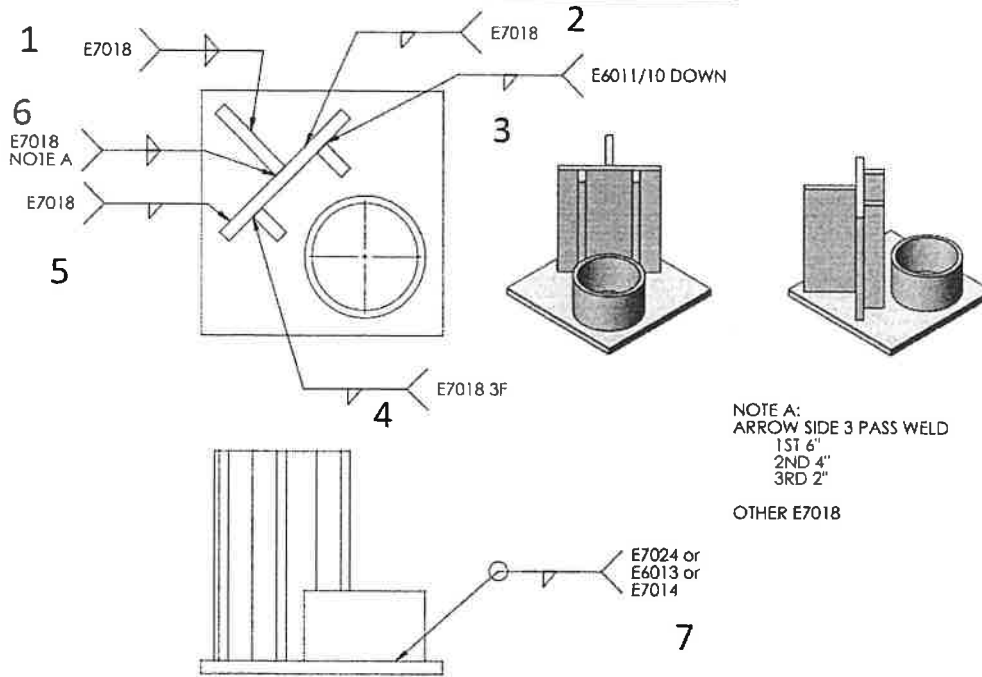
NOTE A:
ARROW SIDE 3 PASS WELD
1ST 6"
2ND 4"
3RD 2"
OTHER E7018

Weld #	Description	Points Possible	Score
1	2F BASE	10	6
2	2F BASE	10	7
3	3F DOWN	10	7
4	3F	10	7
5	2F BASE	10	7
6	gap in weld 3 pass on both 3 pass and vertical	15	5
7	Pipe to Base	10	7
Penalty - -1 Components not square when fit up		Total Points	45 175

✓

Contest # 1376

SMAW



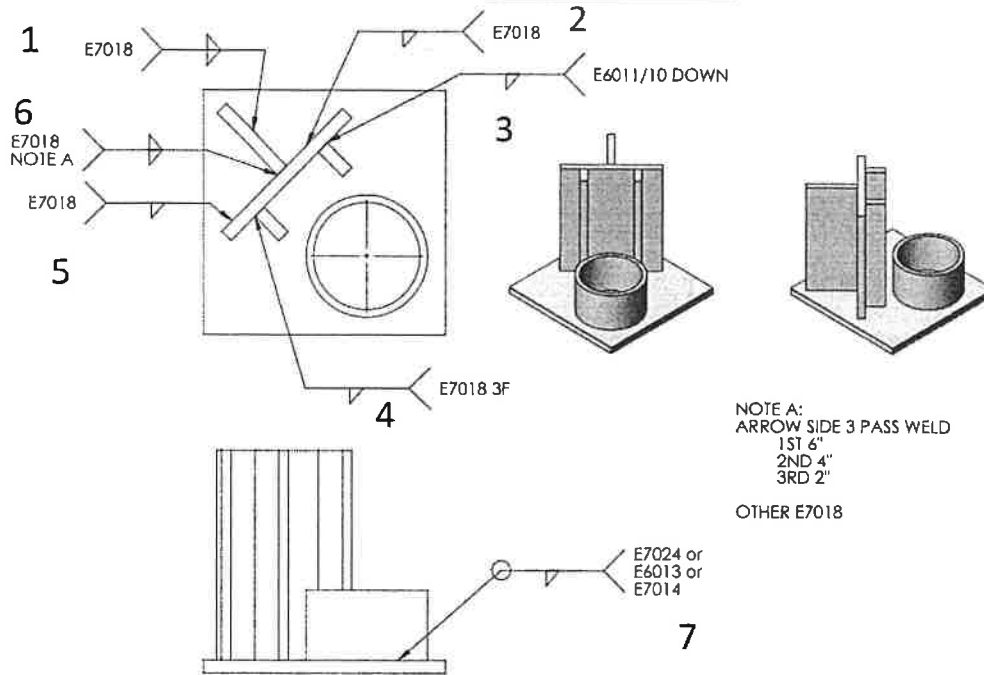
NOTE A:
ARROW SIDE 3 PASS WELD
1ST 6"
2ND 4"
3RD 2"

OTHER E7018

Weld #	Description	Points Possible	Score
1 <i>inconsistent size</i>	2F BASE	10	4
2 <i>inconsistent</i>	2F BASE	10	4
3 <i>missing in spots</i>	3F DOWN	10	5
4 <i>inconsistent size</i>	3F	10	5
5	2F BASE	10	5
6 <i>no 3 pass</i>	3 pass and vertical	15	6
7 <i>inconsistent penetration</i>	Pipe to Base	10	5
Penalty -1 weld on wrong side of mat		Total Points	33
			175

Contest # 1390

SMAW



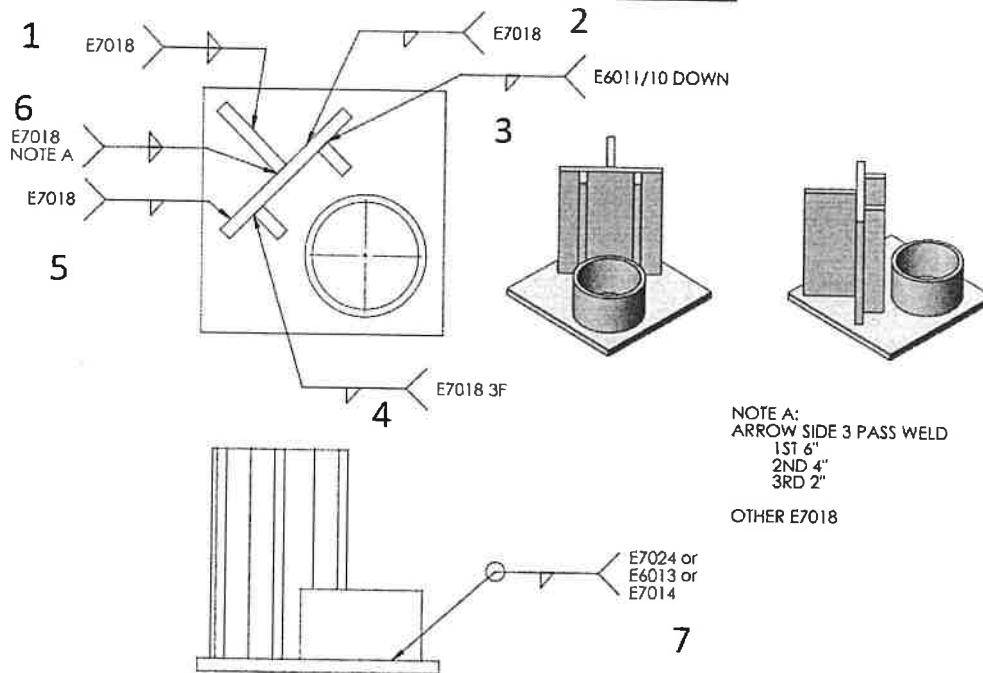
Weld #	Description	Points Possible	Score
1	2F BASE	10	7
2	2F BASE	10	8
3	3F DOWN	10	7
4	3F	10	5
5	2F BASE	10	7
6	3 pass and vertical	15	7
7	Pipe to Base	10	7
Penalty - <i>-1 for wrapping weld 1</i> <i>-1 porosity weld 7</i>		Total Points	46 175

inconsistent weld size

J

Contest # 1866

SMAW



NOTE A:
ARROW SIDE 3 PASS WELD
1ST 6"
2ND 4"
3RD 2"

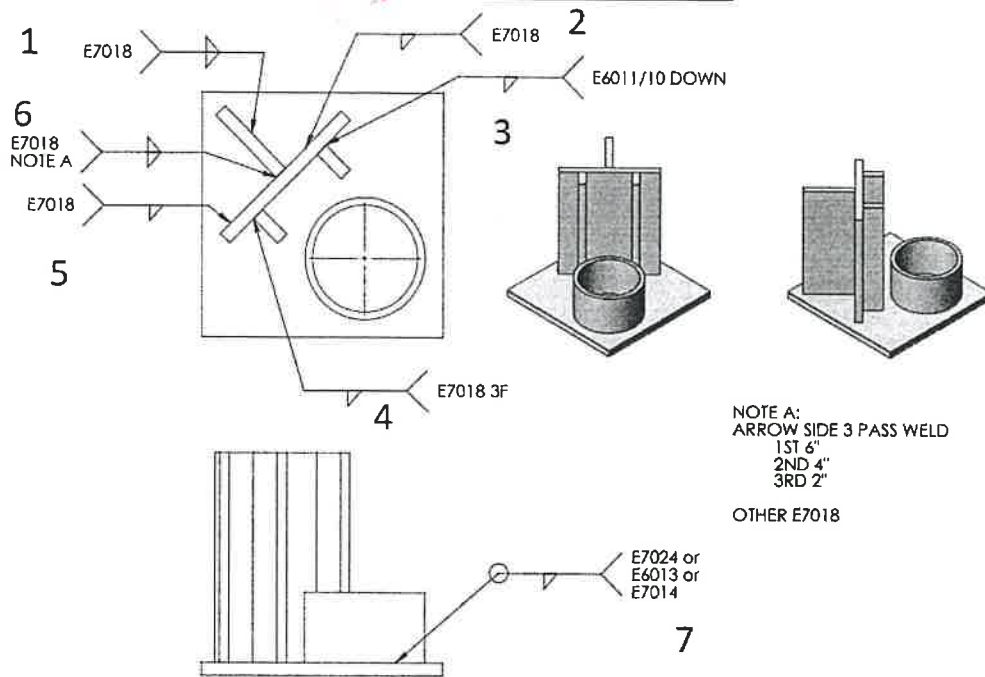
OTHER E7018

Weld #	Description	Points Possible	Score
1 <i>Best welds on part!!</i>	2F BASE	10	7
2	2F BASE	10	6
3 <i>Short, inconsistent</i>	3F DOWN	10	5
4	3F	10	5
5	2F BASE	10	7
6 <i>porosity in 3 pass</i>	3 pass and vertical	15	6
7 <i>inconsistent size porosity</i>	Pipe to Base	10	5
Penalty -1 for warp and off location component	Total Points		40
			45
			175

Weld callout is for one side. Both sides welded.

Contest # 1012

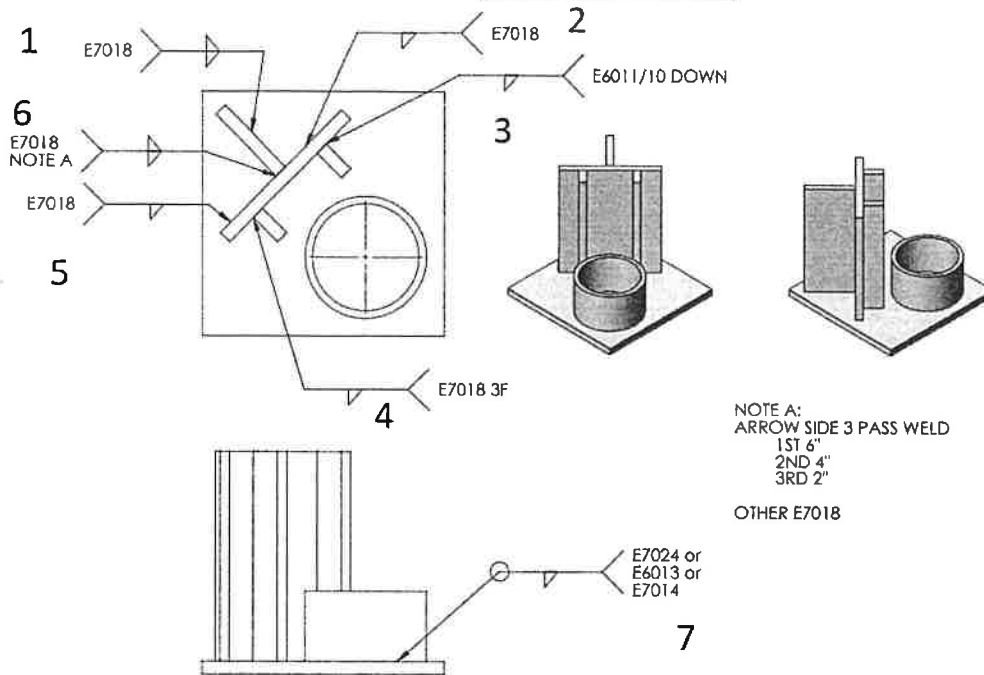
SMAW



Weld #	Description	Points Possible	Score
1 <i>off location, poor penetration</i>	2F BASE	10	5
2 <i>incomplete</i>	2F BASE	10	3
3 <i>short weld, porosity</i>	3F DOWN	10	6
4 <i>short both ends porosity</i>	3F	10	5
5 <i>missing</i>	2F BASE	10	0
6 <i>Incomplete Vert</i>	3 pass and vertical	15	6
7 <i>porosity</i>	Pipe to Base	10	5
Penalty -	Total Points		30 175

Contest # 1020

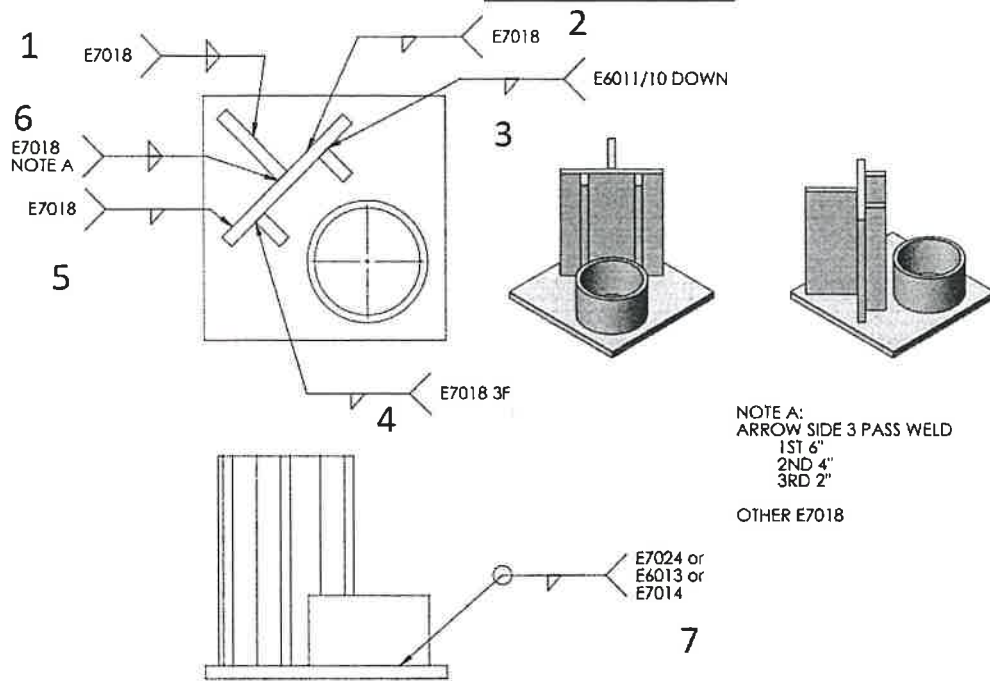
SMAW



Weld #	Description	Points Possible	Score
1	2F BASE	10	8
2 Pinhole	2F BASE	10	8 ¹⁶
3	3F DOWN	10	9 ¹⁷
4	3F	10	8
5	2F BASE	10	7 ²⁷
6	3 pass and vertical	15	12
7	Pipe to Base	10	8
Penalty -		Total Points	56 60 175

Contest # 1601 1091

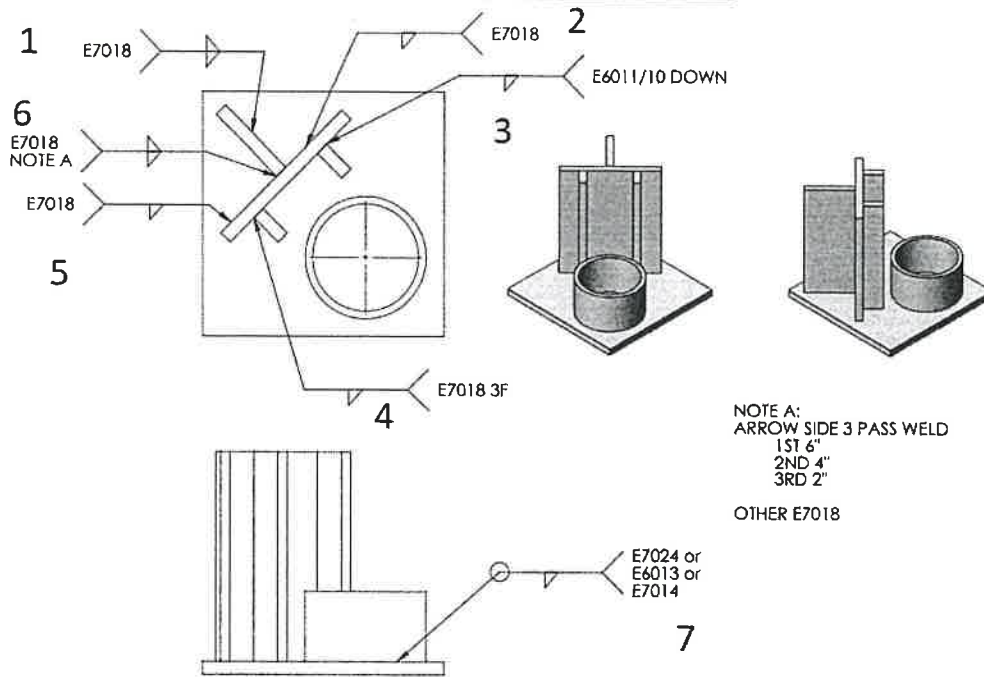
SMAW



Weld #	Description	Points Possible	Score
1	2F BASE	10	8
2	2F BASE	10	8 16
3	3F DOWN	10	7
4	3F	10	7
5	2F BASE	10	7
6	<i>3 pass wrong side</i> 3 pass and vertical	15	8 14
7	Pipe to Base	10	6
Penalty -		Total Points	51 175

Contest # 1100

SMAW



NOTE A:
ARROW SIDE 3 PASS WELD
1ST 6"
2ND 4"
3RD 2"

OTHER E7018

Weld #	Description	Points Possible	Score
1	2F BASE	10	9
2	2F BASE	10	7
3	3F DOWN	10	8
4	3F	10	10
5	2F BASE	10	8
6	3 pass and vertical	15	13
7	Pipe to Base	10	10
Penalty -	Total Points		65

34
31

16

19

21

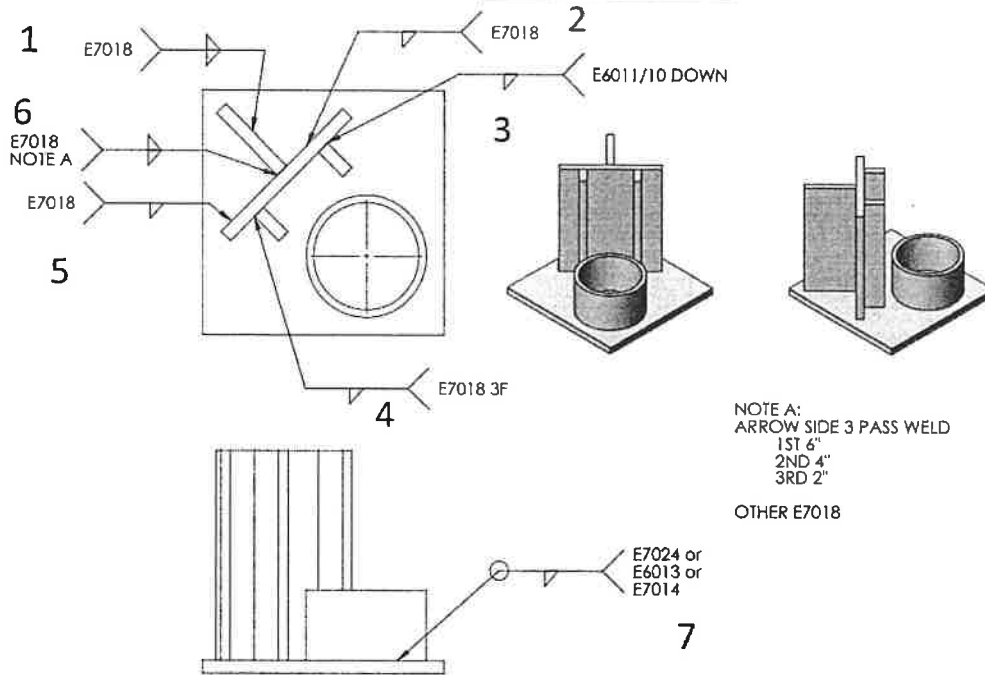
10

175



Contest # 1198

SMAW



NOTE A:
ARROW SIDE 3 PASS WELD
1ST 6"
2ND 4"
3RD 2"

OTHER E7018

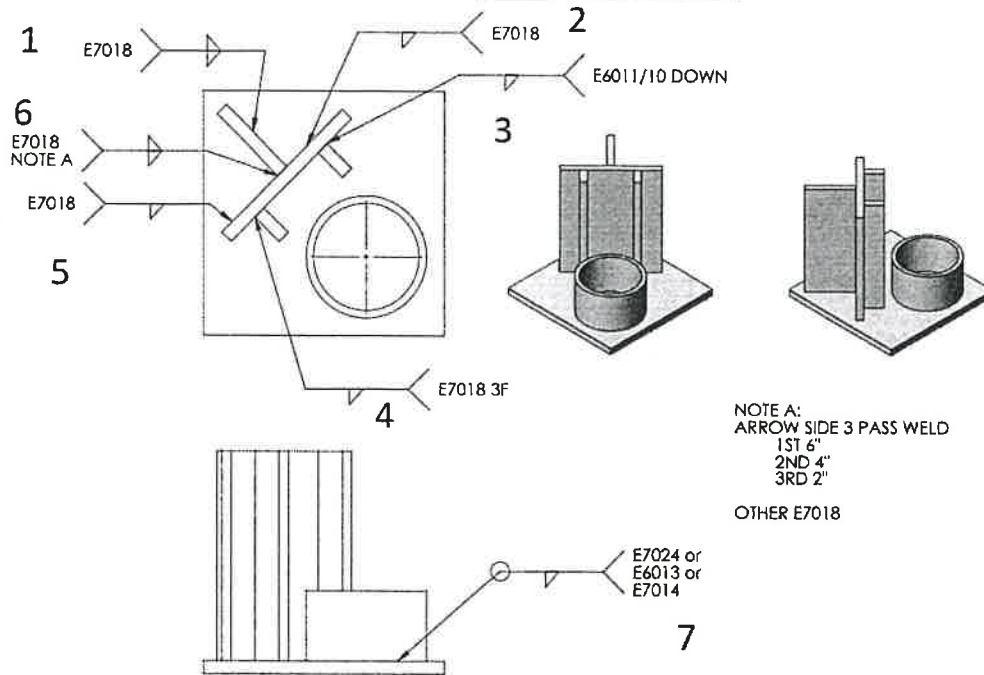
Weld #	Description	Points Possible	Score
1	2F BASE	10	8
2	2F BASE	10	8
3	3F DOWN	10	8
4	<i>Under cut some pin holes</i> 3F	10	7
5	2F BASE	10	8
6	<i>Stopped short on vertical</i> 3 pass and vertical	15	14
7	<i>1 pin hole</i> Pipe to Base	10	8
Penalty - <i>1 component parts pulling away and out of alignment</i>		Total Points	51 175 175

60

61

Contest # 1255

SMAW

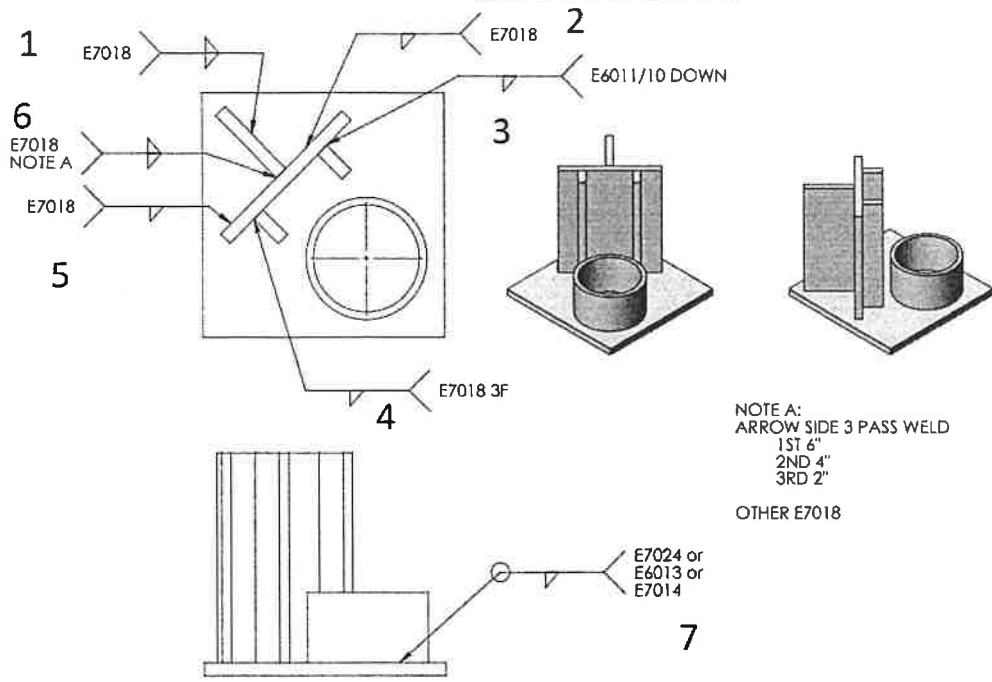


Weld #	Description	Points Possible	Score
1	2F BASE	10	8
2	2F BASE	10	7
3	3F DOWN	10	5
4	3F	10	5
5	2F BASE	10	8
6 <i>Nice!</i>	3 pass and vertical	15	14
7 <i>Nice!</i>	Pipe to Base	10	10
Penalty -	Total Points		57

15
10
32
175

Contest # 1269

SMAW



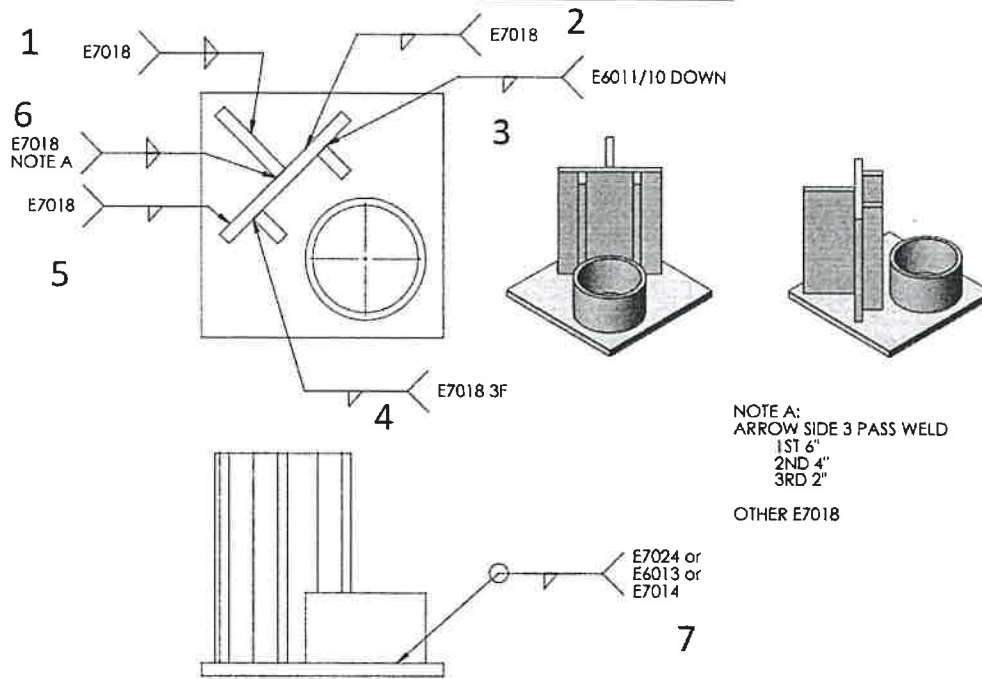
NOTE A:
ARROW SIDE 3 PASS WELD
1ST 6"
2ND 4"
3RD 2"
OTHER E7018

Weld #	Description	Points Possible	Score
1 <i>inconsistent weld size</i>	2F BASE	10	7
2	2F BASE	10	8
3 <i>porosity</i>	3F DOWN	10	6
4 <i>some sag in weld</i>	3F	10	7
5	2F BASE	10	7
6 <i>incomplete penetration</i>	3 pass and vertical	15	10
7 <i>incomplete penetration</i>	Pipe to Base	10	5
Penalty -		Total Points	50
			175

Contest #

1405

SMAW



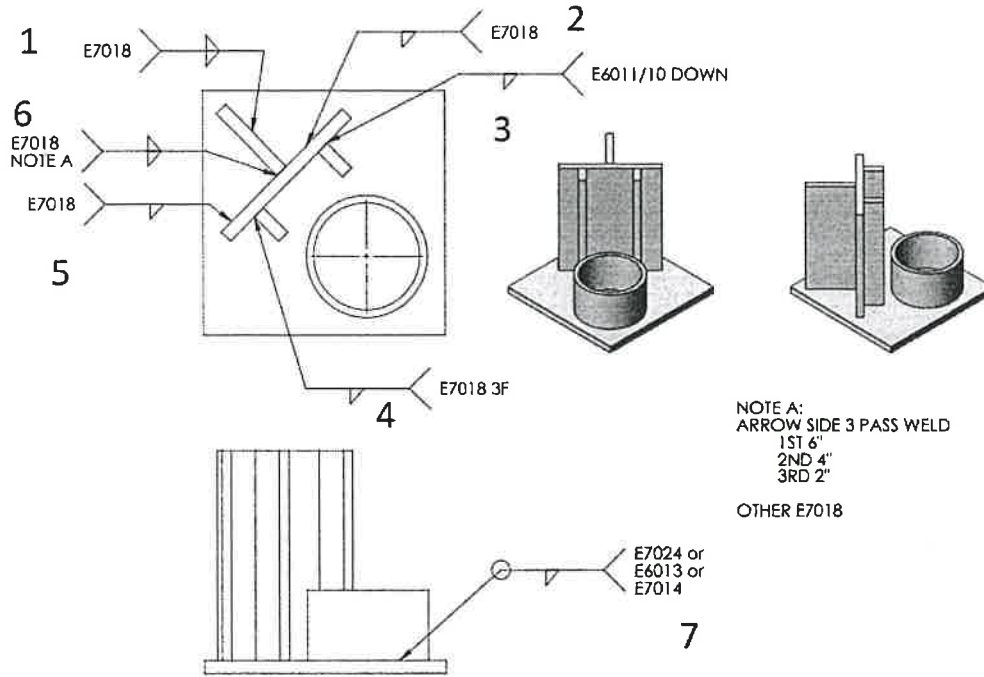
NOTE A:
ARROW SIDE 3 PASS WELD
1ST 6"
2ND 4"
3RD 2"

OTHER E7018

Weld #	Description	Points Possible	Score
1	2F BASE	10	10
2	2F BASE	10	8
3	3F DOWN	10	8
4	3F	10	8
5	2F BASE	10	9
6	3 pass and vertical	15	14
7	Pipe to Base	10	10
Penalty - -1 wrap weld not on drawing		Total Points	66 175

Contest # 1434

SMAW



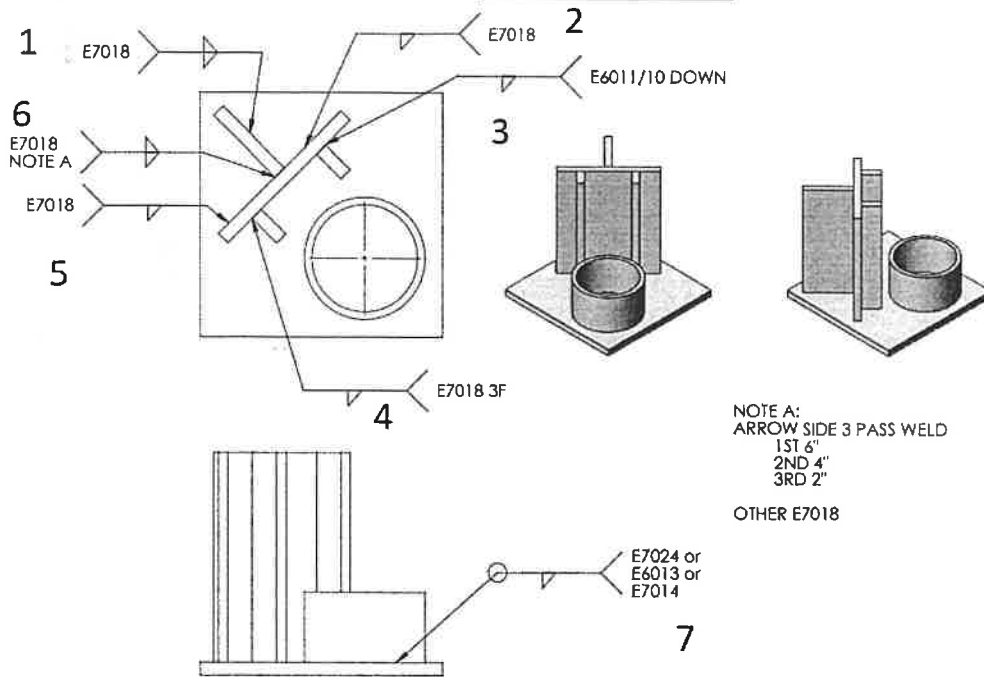
NOTE A:
ARROW SIDE 3 PASS WELD
1ST 6"
2ND 4"
3RD 2"

OTHER E7018

Weld #	Description	Points Possible	Score
1	2F BASE	10	6
2	Pinholes 2F BASE	10	6
3	3F DOWN	10	6
4	Gaps 3F	10	6
5	2F BASE	10	7
6	3 pass and vertical	15	6
7	Pipe to Base	10	8
Penalty -		Total Points	45
			175

Contest # 1470

SMAW



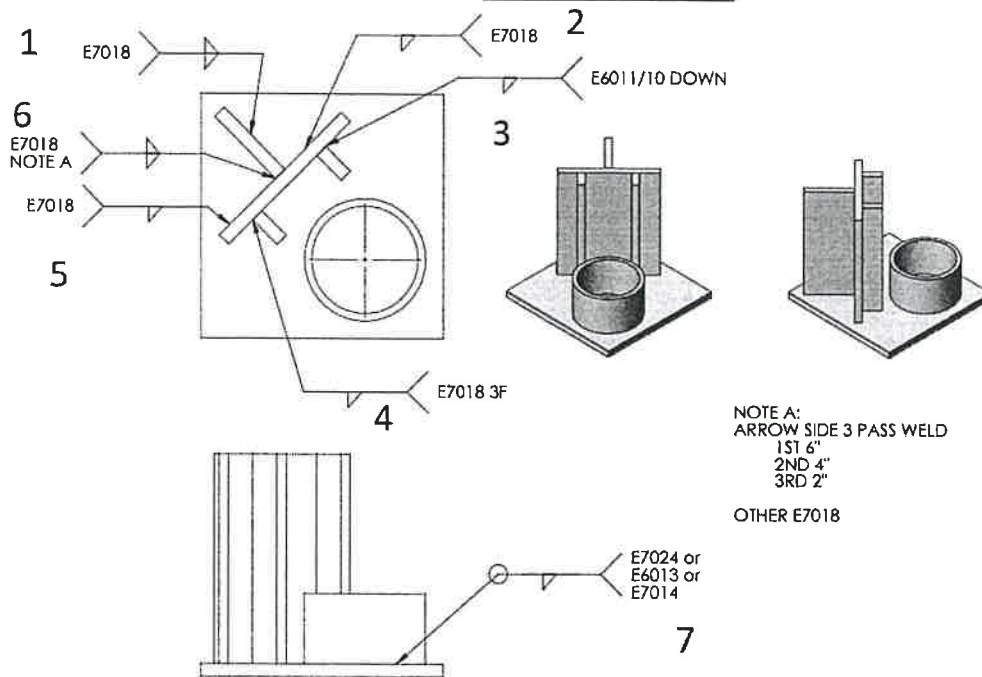
Weld #	Description	Points Possible	Score
1 <i>inconsistent weld size</i>	2F BASE	10	6
2 <i>undercut</i>	2F BASE	10	6
3 <i>pin holes, porosity</i>	3F DOWN	10	5
4 <i>pin holes, porosity</i>	3F	10	5
5	2F BASE	10	6
6 <i>missing</i>	3 pass and vertical	15	0
7 <i>inconsistent pin holes</i>	Pipe to Base	10	5
Penalty - <i>-1 spatter</i>	Total Points		32

175



Contest # 1477

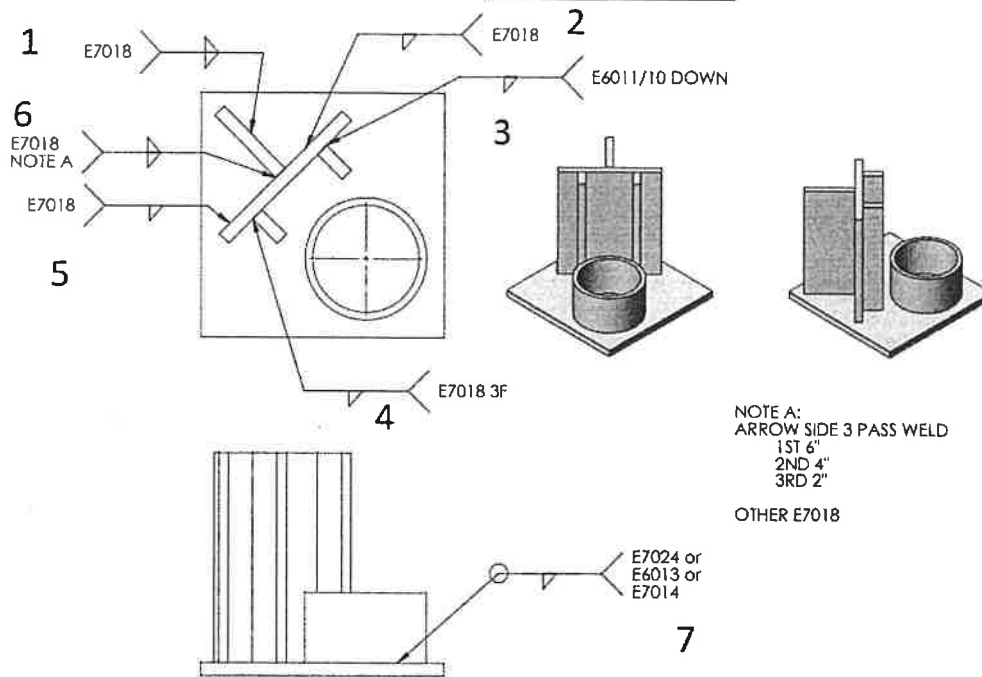
SMAW



Weld #	Description	Points Possible	Score
1	2F BASE	10	6
2	2F BASE	10	6
3	3F DOWN	10	7
4	3F	10	4
5	2F BASE	10	6
6	3 pass and vertical	15	4
7	Pipe to Base	10	7
Penalty -	-1 Excessive spatter	Total Points	39
			175

Contest # 1514

SMAW



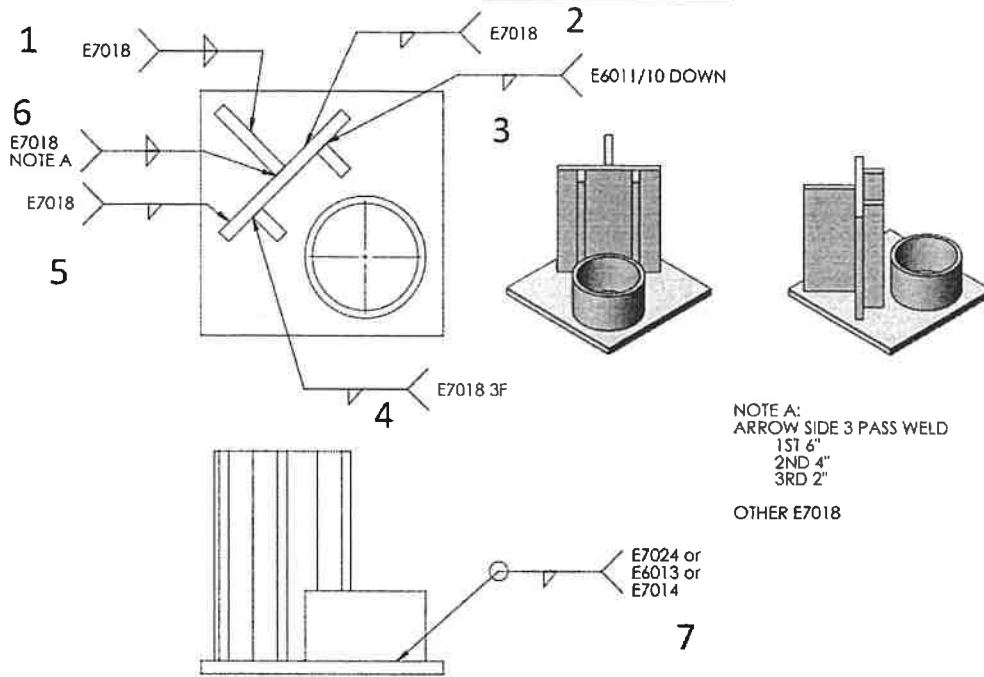
NOTE A:
ARROW SIDE 3 PASS WELD
1ST 6"
2ND 4"
3RD 2"

OTHER E7018

Weld #	Description	Points Possible	Score
1 <i>inconsistent weld size</i>	2F BASE	10	5
2 <i>missing</i>	2F BASE	10	0
3 <i>inconsistent</i>	3F DOWN	10	5
4 <i>porosity</i>	3F	10	5
5 <i>missing</i>	2F BASE	10	0
6 <i>poor 3 pass, missing vertical</i>	3 pass and vertical	15	5
7 <i>inconsistent</i>	Pipe to Base	10	5
Penalty -		Total Points	25 175

Contest # 1518

SMAW



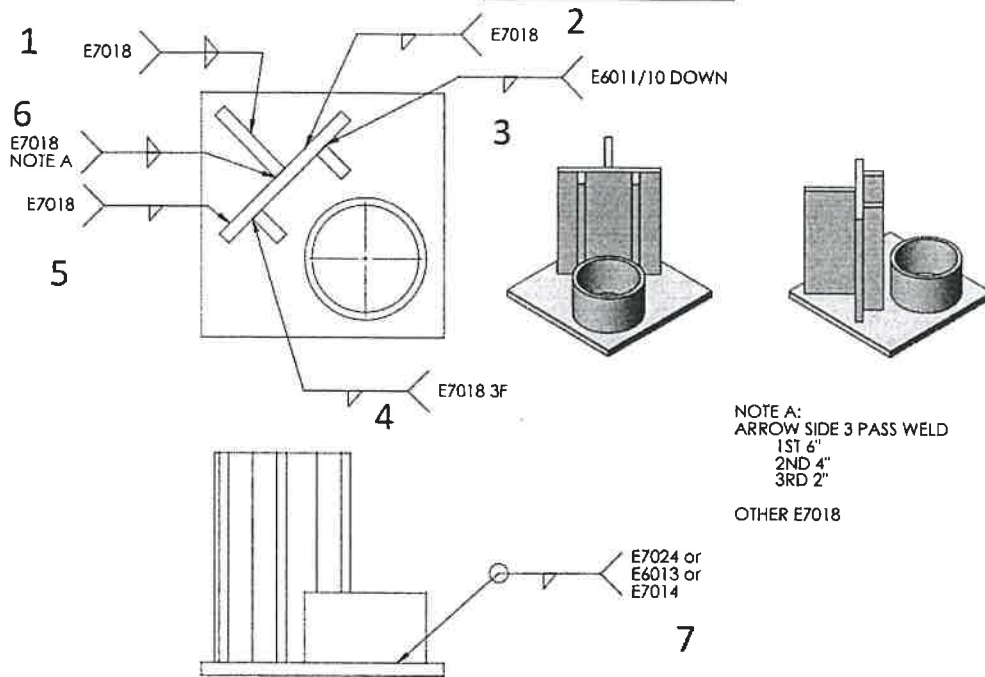
NOTE A:
ARROW SIDE 3 PASS WELD
1ST 6"
2ND 4"
3RD 2"

OTHER E7018

Weld #	Description	Points Possible	Score
1	2F BASE	10	6
2	2F BASE	10	5
3	<i>Excess weld on lower end</i> 3F DOWN	10	5 } 20
4	<i>gaps in weld, porosity</i> 3F	10	4
5	2F BASE	10	8
6	<i>NO 3 pass, porosity</i> 3 pass and vertical	15	6 } 20
7	Pipe to Base	10	6
Penalty - <i>-1 incorrect orientation/location</i>		Total Points	39 / 75

Contest # 1534

SMAW



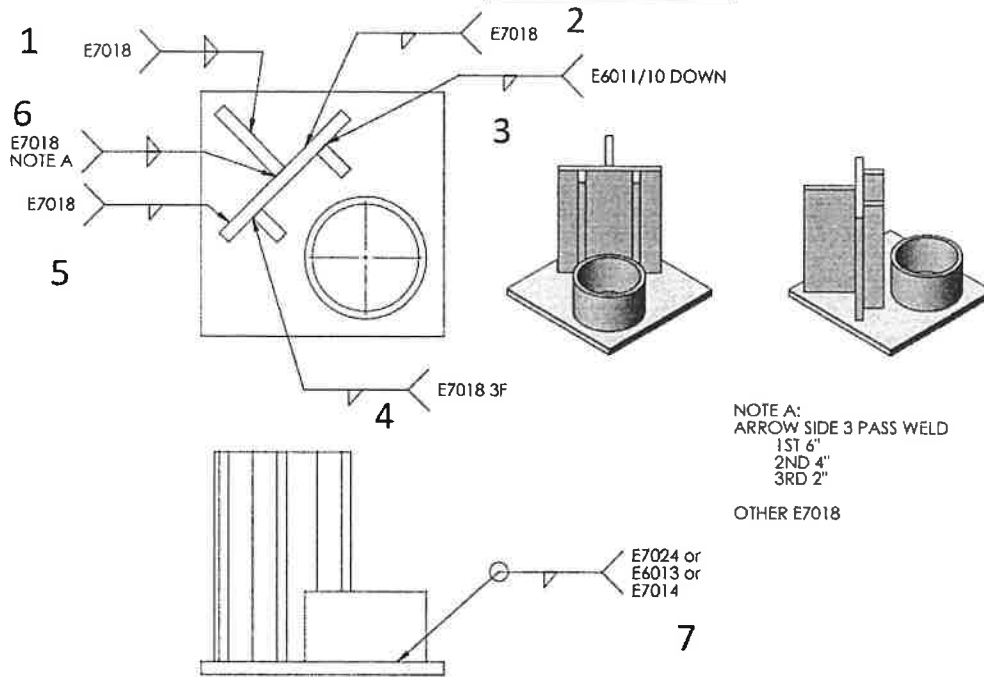
NOTE A:
ARROW SIDE 3 PASS WELD
1ST 6"
2ND 4"
3RD 2"

OTHER E7018

Weld #	Description	Points Possible	Score
1	2F BASE	10	8
2	2F BASE	10	8
3	3F DOWN	10	8
4	3F	10	7
5	2F BASE	10	6
6	3 pass and vertical	15	11
7	Pipe to Base	10	6
Penalty -	Total Points	54	175

Contest # 1591

SMAW



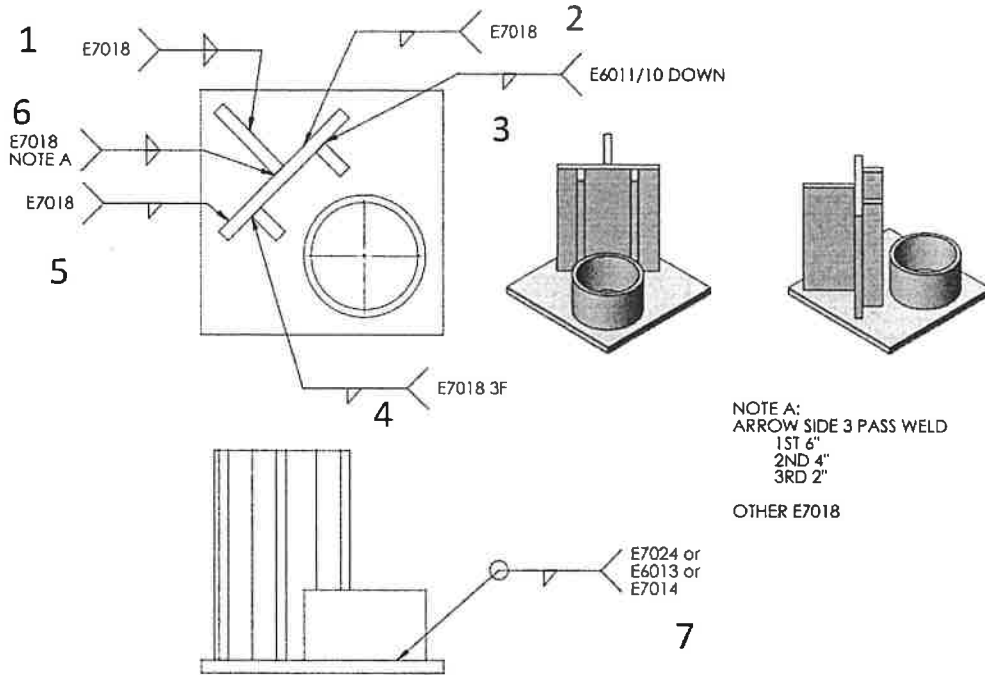
NOTE A:
ARROW SIDE 3 PASS WELD
1ST 6"
2ND 4"
3RD 2"
OTHER E7018

Weld #	Description	Points Possible	Score
1	2F BASE	10	9
2	2F BASE	10	9 / 18
3	3F DOWN	10	7
4 <i>pin hole, short</i>	3F	10	7
5	2F BASE	10	8 22
6	3 pass and vertical	15	11 10
7	Pipe to Base	10	7
Penalty -		Total Points	58 175

Drawing calls for 1 triple pass, not 2. These look great though. Focus on drawing detail.

Contest # 1618

SMAW

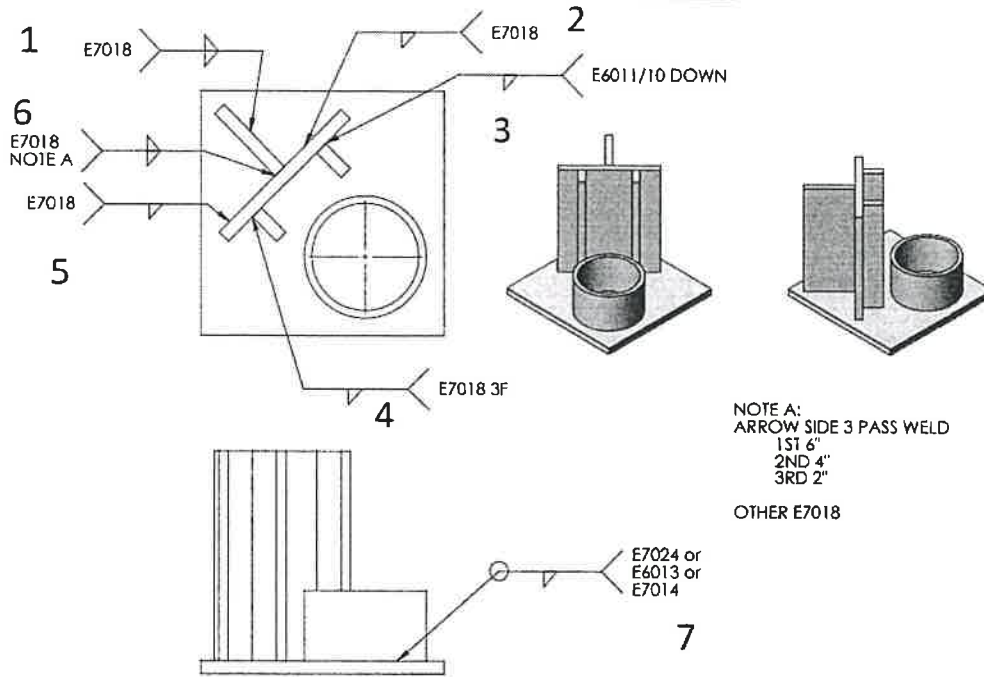


Weld #	Description	Points Possible	Score
1 <i>off center</i>	2F BASE	10	7
2	2F BASE	10	7
3	3F DOWN	10	6
4 <i>inconsistent</i>	3F	10	5
5	2F BASE	10	7
6 <i>poor 3 pass missing vertical</i>	3 pass and vertical	15	6
7	Pipe to Base	10	6
Penalty - <i>-1 lots of spatter</i>	Total Points		43
			175



Contest # 1630

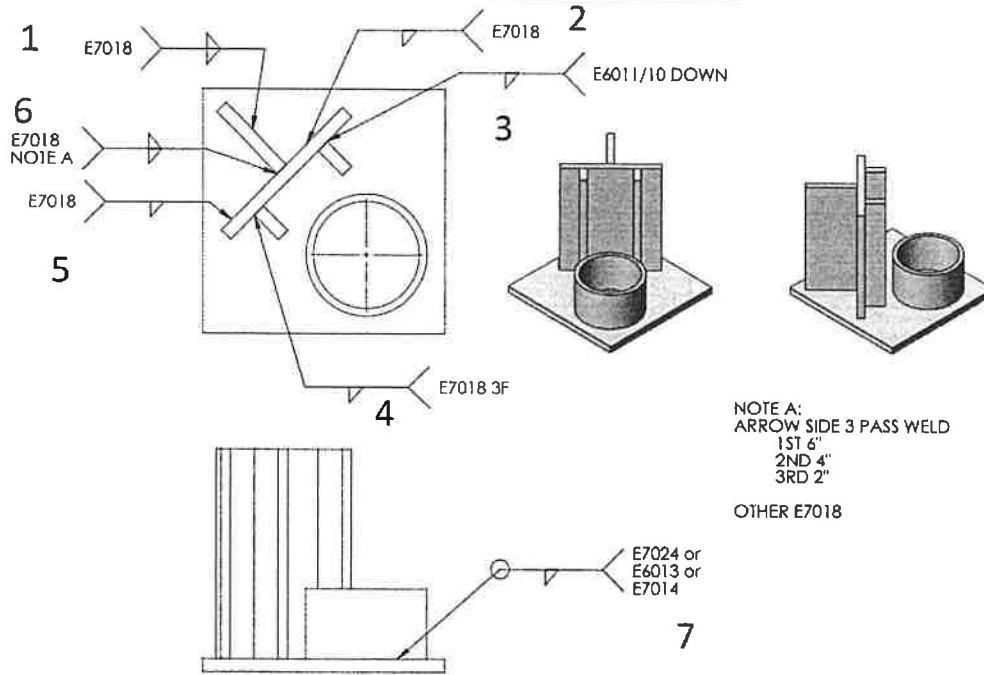
SMAW



Weld #	Description	Points Possible	Score
1 <i>Half missing</i>	2F BASE	10	3
2	2F BASE	10	5
3 <i>Excess spatter</i>	3F DOWN	10	6
4 <i>Spatter</i>	3F	10	6
5 <i>missing</i>	2F BASE	10	0
6 <i>Half missing</i>	3 pass and vertical	15	4
7	Pipe to Base	10	5
Penalty -	Total Points	29	175

Contest # 1649

SMAW



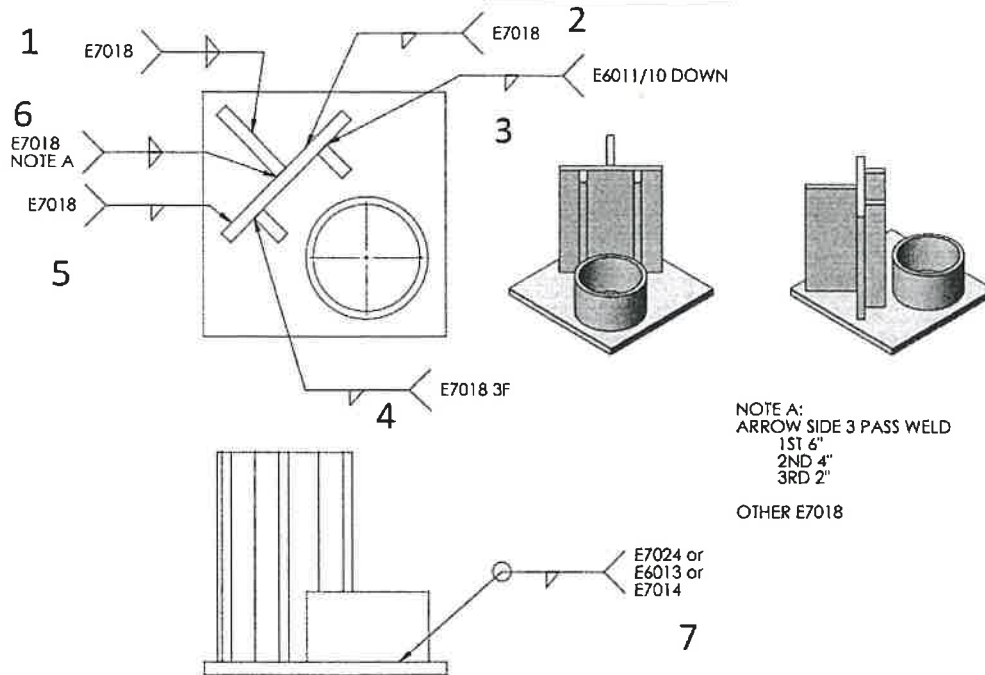
NOTE A:
ARROW SIDE 3 PASS WELD
1ST 6"
2ND 4"
3RD 2"

OTHER E7018

Weld #	Description	Points Possible	Score
1	2F BASE	10	7
2	2F BASE	10	7
3 <i>porosity</i>	3F DOWN	10	6 ²⁰
4 <i>pin holes</i>	3F	10	7
5 <i>off location</i>	2F BASE	10	6 ²¹
6 <i>no 3 pass porosity</i>	3 pass and vertical	15	8
7 <i>inconsistent</i>	Pipe to Base	10	6 ⁶
Penalty -	Total Points		47 ¹⁷⁵

Contest # 1687

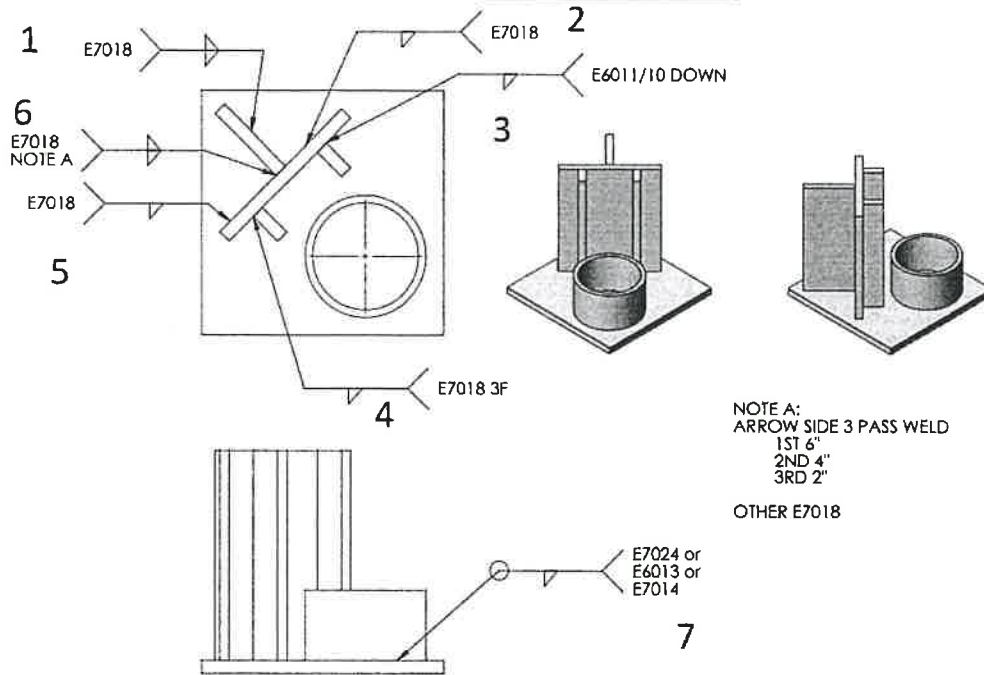
SMAW



Weld #	Description	Points Possible	Score
1	2F BASE	10	9
2	2F BASE	10	7 20
3	3F DOWN	10	4
4	3F	10	5
5	2F BASE	10	8 } 13
6	3 pass and vertical	15	8 } 10
7	Pipe to Base	10	8
Penalty -		Total Points	49 175

Contest # 1726

SMAW



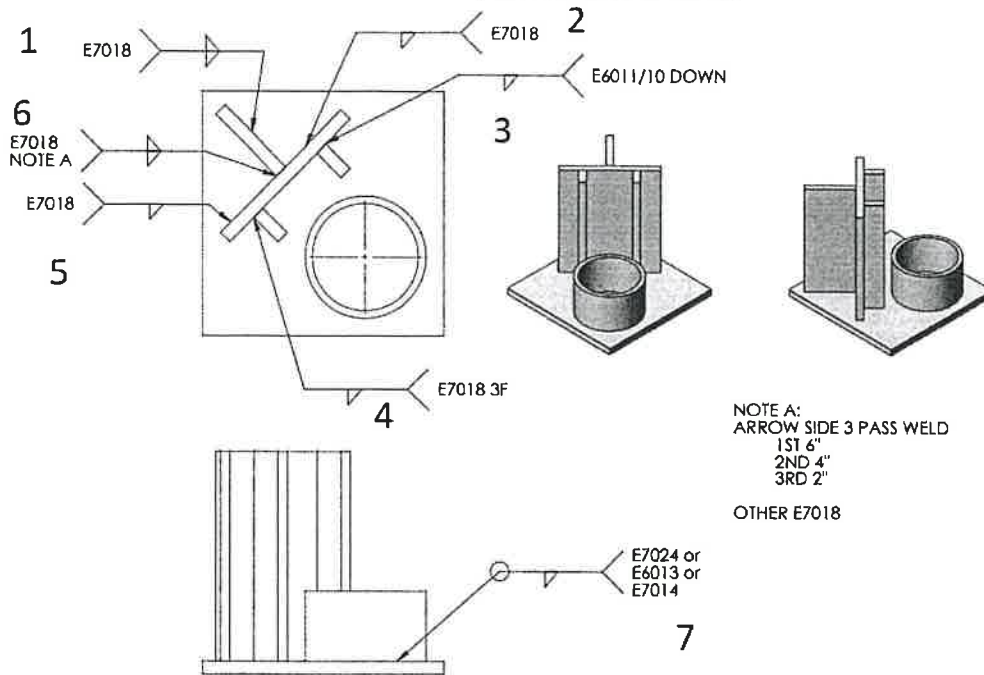
NOTE A:
ARROW SIDE 3 PASS WELD
1ST 6"
2ND 4"
3RD 2"

OTHER E7018

Weld #	Description	Points Possible	Score
1	2F BASE	10	5
2	2F BASE	10	5
3	3F DOWN	10	6
4	3F	10	6
5	2F BASE	10	5
6	3 pass and vertical	15	8
7	Pipe to Base	10	4
Penalty -		Total Points	39 / 75

Contest # 1733

SMAW



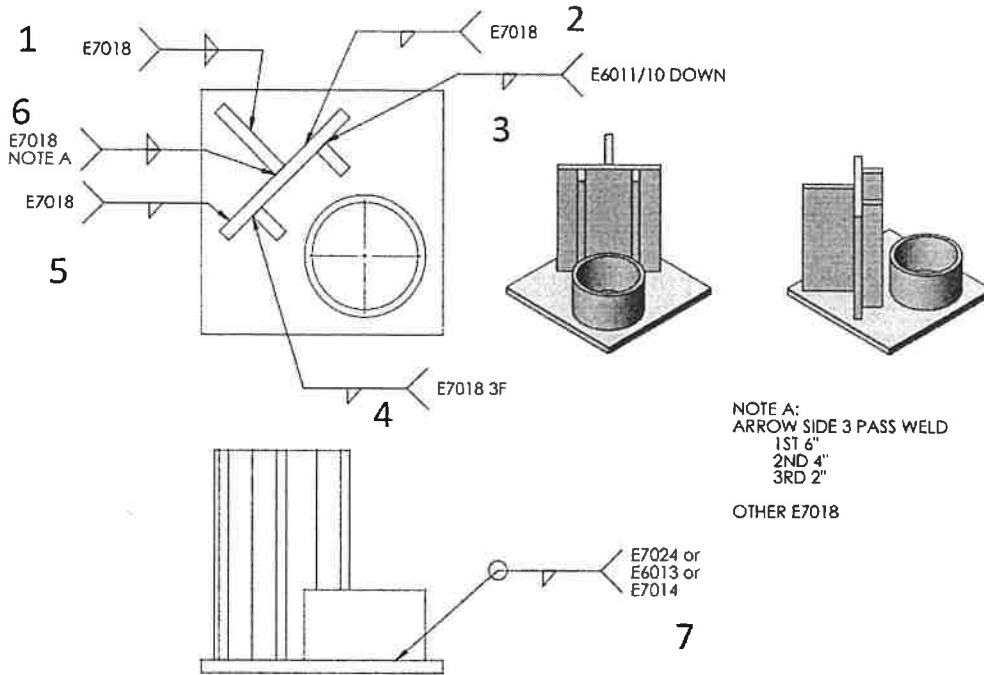
NOTE A:
ARROW SIDE 3 PASS WELD
1ST 6"
2ND 4"
3RD 2"

OTHER E7018

Weld #	Description	Points Possible	Score
1	2F BASE	10	6
2	2F BASE	10	8
3	3F DOWN	10	7
4	3F	10	5
5	2F BASE	10	6
6	<i>No tripple pass</i> 3 pass and vertical	15	7
7	Pipe to Base	10	7
Penalty -		Total Points	46
			175

Contest # 1747

SMAW



NOTE A:
ARROW SIDE 3 PASS WELD
1ST 6"
2ND 4"
3RD 2"

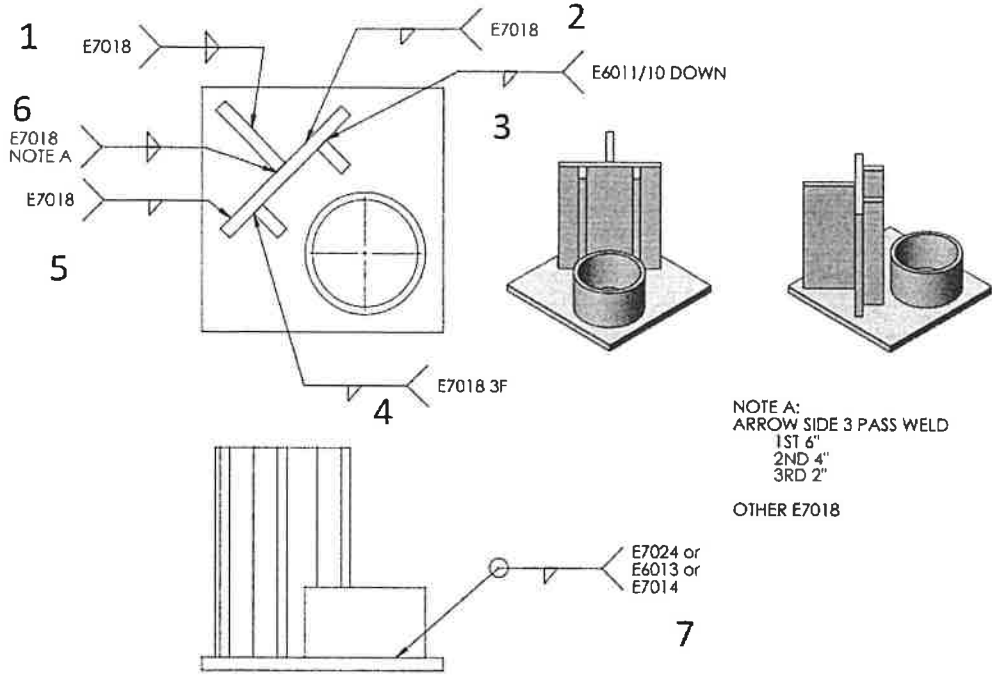
OTHER E7018

Weld #	Description	Points Possible	Score
1	2F BASE	10	6
2	2F BASE	10	7
3 <i>inconsistent</i>	3F DOWN	10	6
4 <i>weld sag</i>	3F	10	6
5 <i>perfect!!</i>	2F BASE	10	8
6 <i>Missing</i>	3 pass and vertical	15	0
7	Pipe to Base	10	5
Penalty -	Total Points		38

175

Contest # 1748

SMAW



NOTE A:
ARROW SIDE 3 PASS WELD
1ST 6"
2ND 4"
3RD 2"

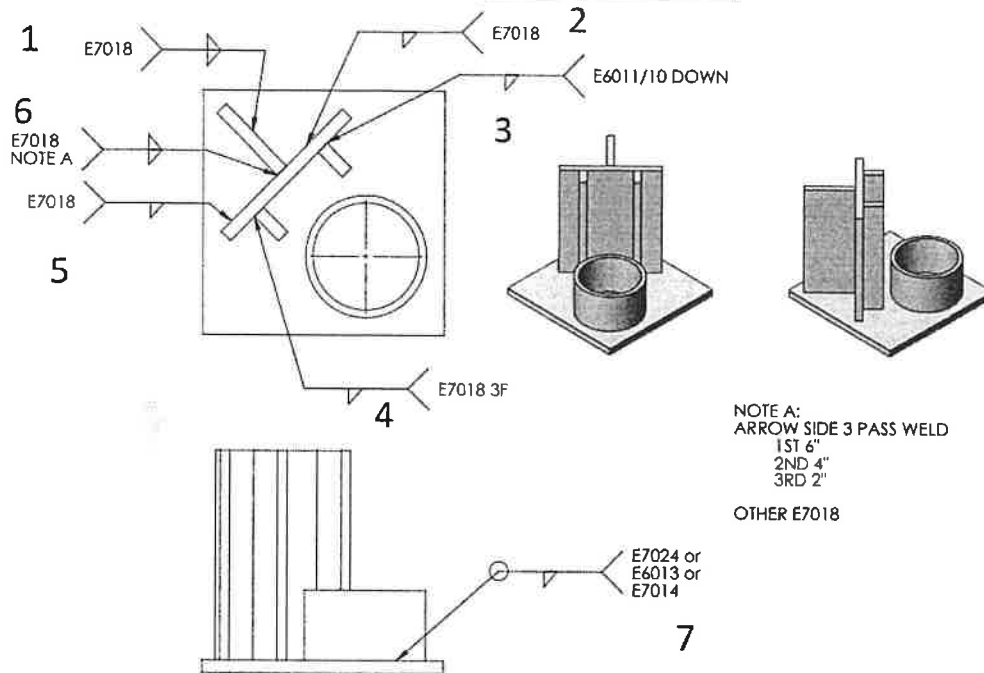
OTHER E7018

Weld #	Description	Points Possible	Score
1 <i>No weld</i>	2F BASE	10	∅
2 <i>No weld</i>	2F BASE	10	∅
3 <i>No penetration</i>	3F DOWN	10	4
4 <i>in complete penetration</i>	3F	10	5
5 <i>No weld</i>	2F BASE	10	∅
6 <i>incomplete No solid weld</i>	3 pass and vertical	15	5
7 <i>No weld</i>	Pipe to Base	10	∅
Penalty -		Total Points	14 175



Contest # 1772

SMAW



NOTE A:
ARROW SIDE 3 PASS WELD
1ST 6"
2ND 4"
3RD 2"
OTHER E7018

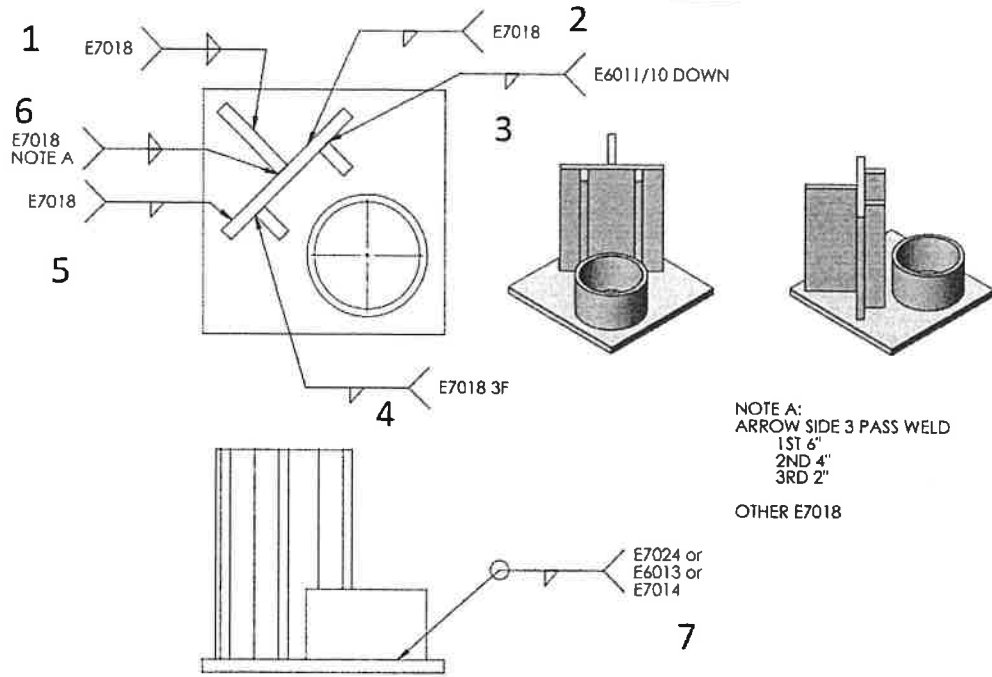
Weld #	Description	Points Possible	Score
1 <i>Some undercut</i>	2F BASE	10	8
2	2F BASE	10	8 > 16
3 <i>pin hole, Stopped short</i>	3F DOWN	10	7
4 <i>inconsistent size</i>	3F	10	5 > 19
5 <i>undercut</i>	2F BASE	10	7
6 <i>Great 3 pass!</i>	3 pass and vertical	15	9 14 > 19
7 <i>Porosity</i>	Pipe to Base	10	5 > 19
Penalty - -1 component of FC location	Total Points		53 175

54



Contest # 1774

SMAW



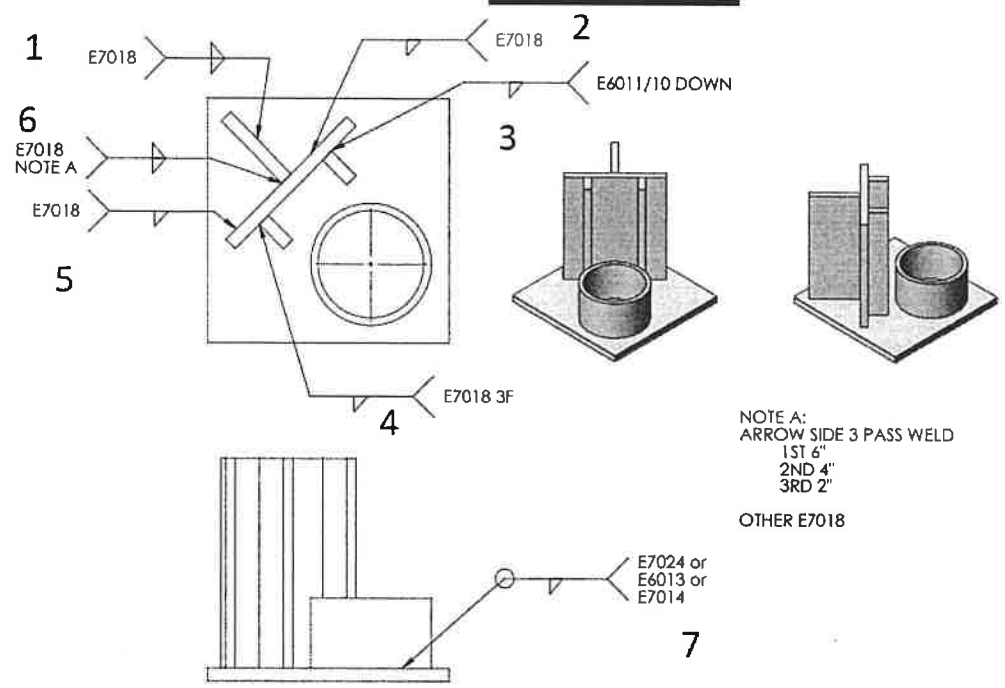
NOTE A:
ARROW SIDE 3 PASS WELD
1ST 6"
2ND 4"
3RD 2"
OTHER E7018

Weld #	Description	Points Possible	Score
1 <i>Short welds,</i>	2F BASE	10	6
2 <i>short</i>	2F BASE	10	5
3 <i>pin holes</i>	3F DOWN	10	6
4 <i>porosity</i>	3F	10	5
5	2F BASE	10	5
6 <i>off location</i>	3 pass and vertical	15	9
7 <i>Nice weld!</i>	Pipe to Base	10	7
Penalty -	Total Points		38 175



Contest # 1784

SMAW



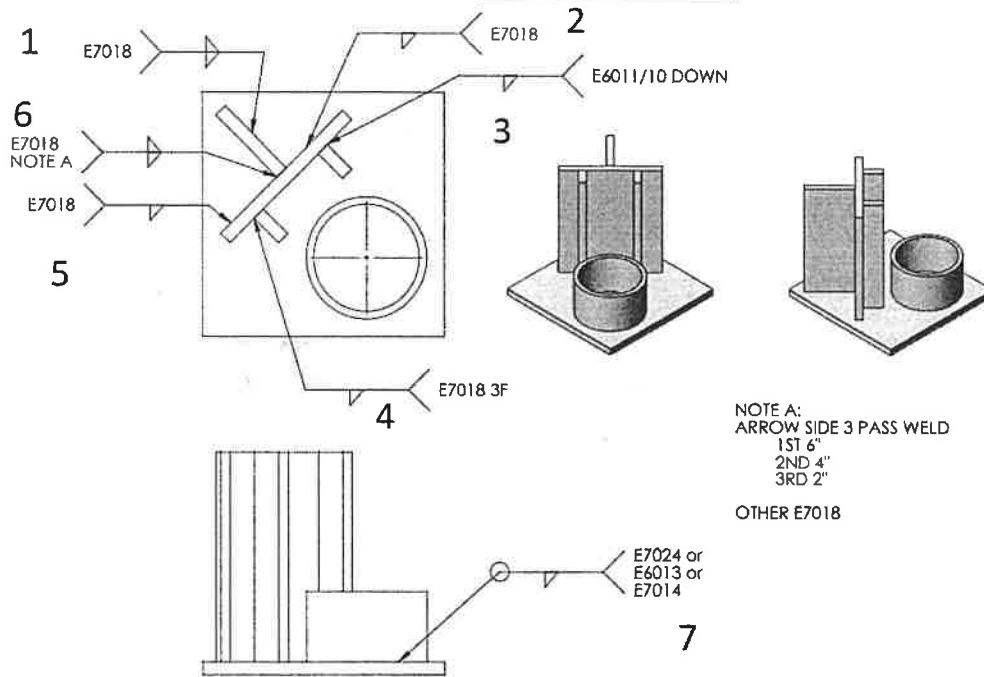
NOTE A:
ARROW SIDE 3 PASS WELD
1ST 6"
2ND 4"
3RD 2"
OTHER E7018

Weld #	Description	Points Possible	Score
1	2F BASE	10	8
2	2F BASE	10	7
3	<i>Short, porosity</i> 3F DOWN	10	6
4	3F	10	7
5	2F BASE	10	5
6	<i>no separation of 3 pass</i> 3 pass and vertical	15	10
7	<i>pin holes</i> Pipe to Base	10	6
Penalty -		Total Points	49 175

49

Contest # 1792

SMAW

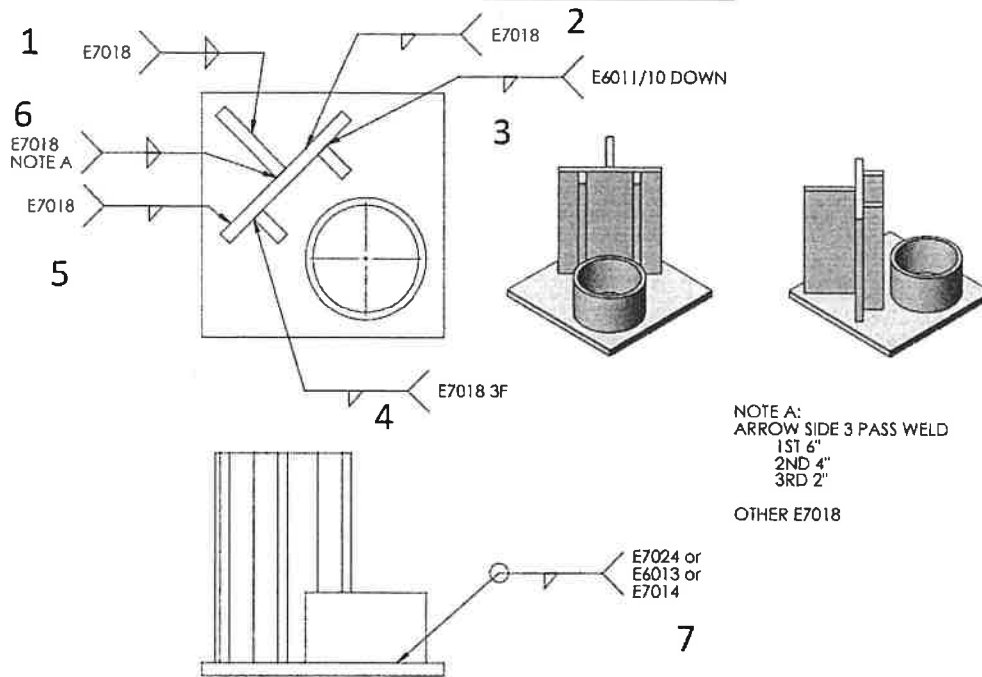


Weld #	Description	Points Possible	Score
1 <i>no weld on left side</i>	2F BASE	10	4
2 <i>weld is short</i>	2F BASE	10	5
3 <i>weld is short, porosity</i>	3F DOWN	10	6 15
4 <i>inconsistent</i>	3F	10	5
5 <i>poor penetration</i>	2F BASE	10	3 8
6 <i>no 3 pass, porosity</i>	3 pass and vertical	15	6
7 <i>incomplete</i>	Pipe to Base	10	5 11
Penalty - <i>poor alignment, fit-up</i>		Total Points	33 175



Contest # 1811

SMAW



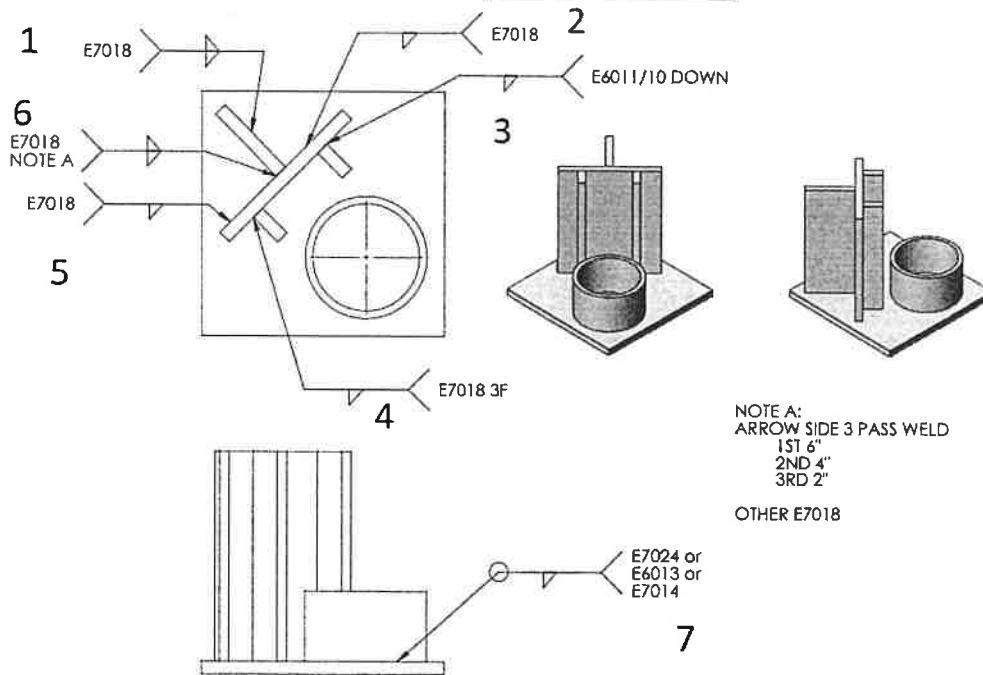
NOTE A:
ARROW SIDE 3 PASS WELD
1ST 6"
2ND 4"
3RD 2"

OTHER E7018

Weld #	Description	Points Possible	Score
1 <i>poor penetration</i>	2F BASE	10	5
2	2F BASE	10	6 17
3 <i>pin holes</i>	3F DOWN	10	6
4 <i>inconsistent</i>	3F	10	5 10
5 <i>poor penetration</i>	2F BASE	10	5 6
6 <i>missing</i>	3 pass and vertical	15	0
7 <i>porosity</i>	Pipe to Base	10	6
Penalty -		Total Points	33 175

Contest # 1829

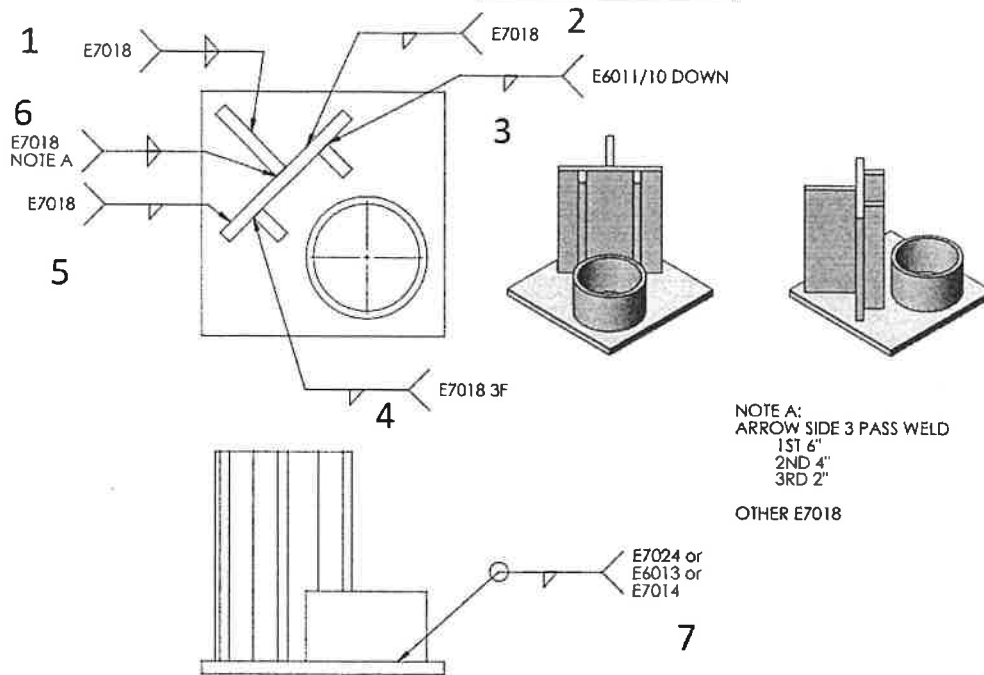
SMAW



Weld #	Description	Points Possible	Score
1 <i>missing</i>	2F BASE	10	0
2	2F BASE	10	6
3	3F DOWN	10	5 7 11
4	3F	10	5 10
5	2F BASE	10	7
6 <i>incomplete 3, missing vertical</i>	3 pass and vertical	15	6 10
7 <i>incomplete</i>	Pipe to Base	10	4
Penalty -	Total Points		33 175

Contest # 1833

SMAW



NOTE A:
ARROW SIDE 3 PASS WELD
1ST 6"
2ND 4"
3RD 2"

OTHER E7018

Weld #	Description	Points Possible	Score
1 <i>Slightly off center</i>	2F BASE	10	7
2	2F BASE	10	7
3 <i>Very nice</i>	3F DOWN	10	9
4 <i>porosity at start/stop</i>	3F	10	6
5	2F BASE	10	7
6 <i>Slightly off location</i>	3 pass and vertical	15	7
7 <i>large hole</i>	Pipe to Base	10	6
Penalty -	Total Points		49
			175

